

EMRICK MACHINERY SALES



INTERNATIONAL MANUFACTURING TECHNOLOGY SHOW
SEPTEMBER 9-14, 2024 • MCCORMICK PLACE • CHICAGO

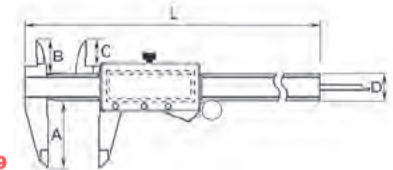
CALL US AT 559-233-6115 OR VISIT OUR WEBSITE AT EMRICKMACHINERY.COM

Dasqua® BIG SCREEN DIGITAL ELECTRONIC CALIPER



- Surfaces of beam ground (Parallelism: 0.015, 20% better than normal) to ensure smooth movement throughout.
- Special glass etching for super accuracy.
- Standard CR-2032 (3V) battery included.

- Digit Size: 11.5mm.
- Inch, Metric, Fractional.
- Meets DIN 862.



REPLACEMENT BATTERY (ITEM #4102-0032)....Sale \$2.99

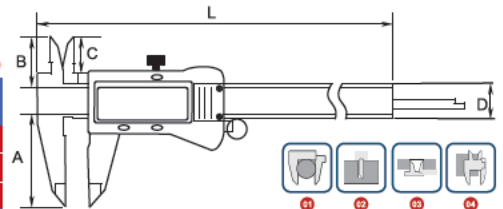
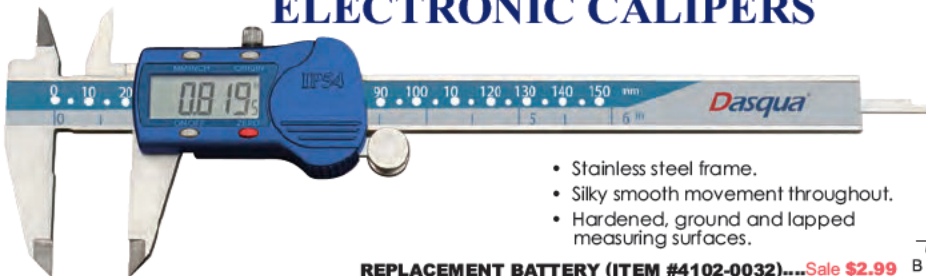
Item#	Range	Reading	(mm)					Accuracy	Sale (F)
			A	B	C	D	L		
1804-1065	0-6"/0-150mm	0.01mm/0.0005"	40	20	15.5	16	235	0.02mm/0.001"	38.19



Dasqua® METAL HOUSING BIG SCREEN DIGITAL ELECTRONIC CALIPERS



- Stainless steel frame.
- Silky smooth movement throughout.
- Hardened, ground and lapped measuring surfaces.



REPLACEMENT BATTERY (ITEM #4102-0032)....Sale \$2.99

Item#	Range	Reading	(mm)					Accuracy	Sale (F)
			A	B	C	D	L		
2117-9105	0-6"/0-150mm	0.01mm/0.0005"	40	20	15.5	16	235	0.02mm/0.001"	49.99
2117-9110	0-8"/0-200mm	0.01mm/0.0005"	50	24	19.5	16	287	0.03mm/0.0015"	78.70
2117-9115	0-12"/0-300mm	0.01mm/0.0005"	60	26	21.5	16	290	0.03mm/0.0015"	117.47



Visit Our Website to See All 52 Pages Online!

IMTS SHOW SPECIAL
2024
BUY IT NOW
SAVE UP TO 15%

Fall / Winter Sale



Dasqua® 1" DIAL INDICATOR (GROUP 2)

- Hardened metal construction for longer life.
- Stable and high accuracy.
- Made in accordance to ASME B89.1.10M-2001
- Extra flannelette bag to protect the dial indicator for repeated usage.
- Stem: 3/8"
- Dial Face: 2"
- 4-48 Thread



Item#	Range	Graduation	Style	Accuracy	Hysteresis	Sale (F)
5122-4212	0-1"	0.001"	Lug Back	±2	0.33	19.39



Dasqua® 2PC MAGNETIC BASE WITH FINE ADJUSTMENT & 1" DIAL INDICATOR SET

MAGNETIC BASE

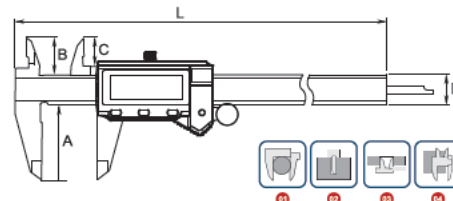
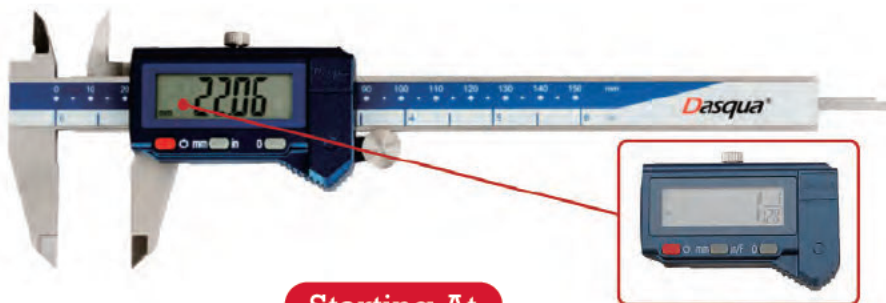
- Holding power 60kg
- Fine adjustment
- On/off switch
- Power Pull: 132 lbs
- Overall Height: 9"
- Max Reach: 16"
- Hold most of AGD group indicators with stem 4mm/8mm/3/8" diameter.
- Base: 2" (Width) x 2-.36" (Depth) x 2.2" (Height)

0~1" DIAL INDICATOR

- Graduation: .001"
- Lug back
- Contact point thread 4-48
- Stem: 3/8"
- Dial Face: 2"

Item#	Range	Dial Indicator Item#	Magnetic Base Item#	Sale (F)
7611-2010	0-1"	5122-4212	7123-1004	37.05

Dasqua® IP54 WATER RESISTANT DIGITAL ELECTRONIC CALIPERS



Starting At
\$54.50

Fraction

- NEW Advanced design.
- Strictly made in accordance with DIN862.
- Silky smooth movement throughout.
- Hardened, ground and lapped measuring surfaces.



REPLACEMENT BATTERY (ITEM #4102-0032).....Sale \$2.99

Item#	Range	Reading	(mm)					Accuracy	Sale (F)
			A	B	C	D	L		
9020-1005	0-6"/0-150mm	0.01mm / 0.0005" / 1/128"	40	20	15.5	16	235	0.02mm/0.001"	54.50
2000-1010	0-8"/0-200mm	0.01mm / 0.0005" / 1/128"	50	24	19.5	16	287	0.03mm/0.0015"	83.96
2000-1015	0-12"/0-300mm	0.01mm / 0.0005" / 1/128"	60	26	21.5	16	390	0.03mm/0.0015"	113.70

2024 BUY IT NOW

Sale Ends Dec. 31, 2024

Dasqua® SHOCK-PROOF 6" DIAL CALIPER WITH FREE DEPTH GAGE ATTACHMENT & 1" GAGE BLOCK

- The entire body jaws are vacuum hardened with uniform hardness, guaranteeing longer wear-resistance and longer service life.
- The upper and lower parts of the slide scale body are precisely ground to ensure smooth operation.
- Tough shock-proof gearing
- Use for measuring outside diameter, inside diameter, step and depth
- Made of solid stainless steel
- Strictly made in accordance with DIN862
- Distinct lines and figures laser etched against satin chrome finish
- With locking screw for stable reading
- Large dial for easy and clear reading
- Includes dial caliper, free depth gage attachment and fitted case.



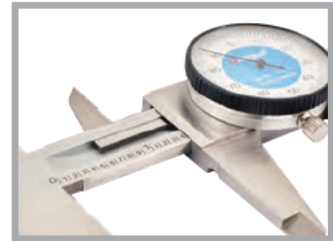
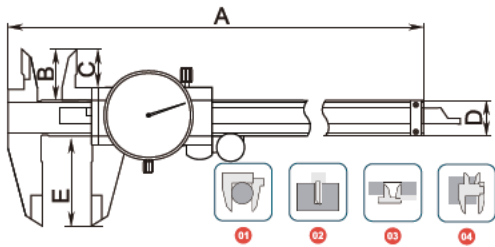
DIN 862

SHOCK-PROOF

DOUBLE SHOCK-PROOF

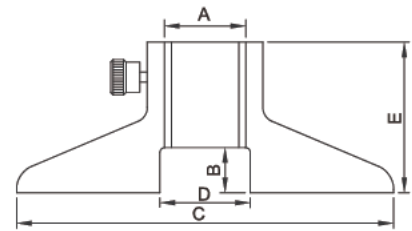


Item 2210-8280
Sale Price \$5621 (F)



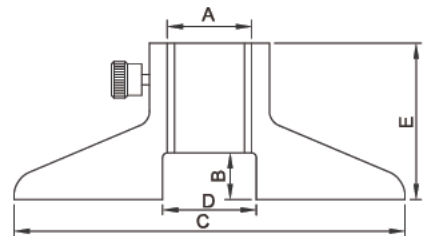
Range	Graduation	(mm)					Accuracy
		A	B	C	D	E	
0-6"	0.001"	236	21	16.5	16	40	0.001"

Depth Base					Application
(mm)					
A	B	C	D	E	Base Length 75mm; for width of the beam 16mm
16.5	9	75	18	30	



Dasqua® CALIPER DEPTH BASE ATTACHMENT

- Increases the stability of the caliper when measuring the depth of a hole or recess.
- Made of solid stainless steel
- Measuring surfaces ground for ultimate accuracy



Item#	(mm)					Application	Sale (F)
	A	B	C	D	E		
3001-1001	16.5	9	75	18	30	Base Length 75mm; for width of the beam 16mm	18.65

Sale Ends Dec. 31, 2024
2024 BUY IT NOW

IMTS SHOW SPECIAL
2024
BUY IT NOW
SAVE UP TO 15%

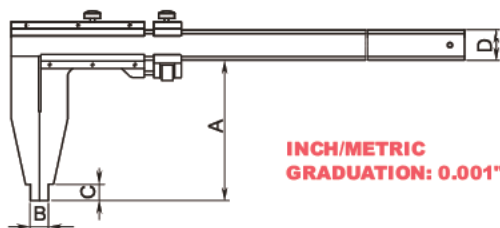
Fall / Winter Sale

Dasqua® 20"/500mm 6" LONG JAW VERNIER CALIPER

- Nib style jaws.
- With fine adjustment thumbscrew.
- Hardened ground jaws with precision lapped measuring faces.
- Satin chrome finish, hardened stainless steel throughout for longer life.
- Distinct lines and figures etched against satin chrome finish.
- Hard plastic case included.

6" LONG JAW

20"/500MM
Item 1310-0006
Sale Price **\$169.94** (F)



INCH/METRIC
GRADUATION: 0.001"/0.02MM

SPECIFICATIONS:

Range	Graduation	(mm)				Accuracy
		A	B	C	D	
0-500/0-20"	0.02/0.001"	150	10	12	32	±0.05

Dasqua® 0-3.2" PRECISION DIGITAL ELECTRONIC BRAKE ROTOR CALIPER



- Precision digital brake rotor caliper: inch/metric/fractional interchangeable with large display for easy reading.
- Measuring range: 0-3.2" / 0-80mm
- Accuracy: ±0.0005" / 0.01mm
- Repeatability: 0.001"

- Hardened stainless steel body with hold function for easy measurement recording.
- Brake rotor gage wheels for non-invasive rotor measurement, ideal for assessing brake pad wear and thickness measurement.

Range: 0-3.2"/0-80mm
Item 1804-1030
Sale Price **\$68.25** (F)

MEASURE THE ROTOR WITHOUT REMOVING THE WHEEL.



MM/INCH/FRACTION
Resolution: 0.0005"/0.01mm/1/64"



REPLACEMENT BATTERY (ITEM #4102-0032).....Sale \$2.99

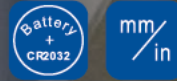
2024 BUY IT NOW

Sale Ends Dec. 31, 2024

Fall / Winter Sale

LIMITS SHOW SPECIAL
2024
BUY IT NOW
SAVE UP TO 15%

Dasqua® 6" LEFT HANDED DIGITAL ELECTRONIC CALIPER



DESIGNED SPECIALLY FOR LEFT-HANDED USE

- More accurate measurements for left-handed users.
- Advantages in specialized applications.
- Resolution 0.0005"/0.01mm.
- Accuracy 0.001"/0.02mm.
- Zero setting at any position.
- Inch/mm system interchangeable.
- Battery: CR2032



0-150MM/0-6 INCH
Item 2030-0005
Sale Price **\$59.34** (F)

INCH/METRIC
0.0005"/0.01MM RESOLUTION

REPLACEMENT BATTERY (ITEM #4102-0032).....Sale \$2.99

Dasqua® 0-6" BRAKE ROTOR DIGITAL ELECTRONIC CALIPER

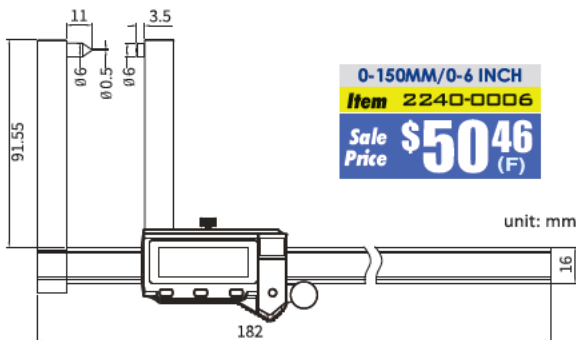
- Digital brake rotor caliper
- Measuring range: 0-140mm/0-5.5"
- Easily detect wear, grooves and warping with precise rotor thickness measurements using the Dasqua electronic precision caliper.

- Resolution: 0.01mm/0.0005"
- Accuracy: 0.05mm/0.002"
- Battery: CR2032



INCH/METRIC
0.0005"/0.01MM RESOLUTION

0-150MM/0-6 INCH
Item 2240-0006
Sale Price **\$50.46** (F)



REPLACEMENT BATTERY (ITEM #4102-0032).....Sale \$2.99



Sale Ends Dec. 31, 2024
2024 BUY IT NOW

IMITS SHOW SPECIAL
2024
BUY IT NOW
SAVE UP TO 15%

Fall / Winter Sale

Dasqua® ELECTRONIC DIGITAL OUTSIDE MICROMETER WITH STAINLESS STEEL SPINDLE

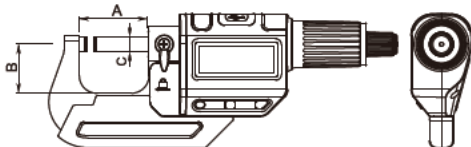
- Spindle ground twice which makes pitch error 1µ less than before and reaches world-class standard

- New special carbide used on measuring anvil instead of traditional easy-wear off carbide tip

- Stainless steel newly adapted on spindle instead of carbon steel

INCH/METRIC
.0005" RESOLUTION

- With ratchet stop for constant force (5- 8N 20% higher than normal)



0-1" Range
Item 4230-2005
Sale Price \$7478 (F)



SPECIFICATIONS:

Range	Resolution	(mm)			Accuracy
		A	B	C	
0-1"/0-25mm	0.00005"/0.001mm	31.5	22.5	Ø6.5	0.00012"/0.003mm

Dasqua® 0~0.5" DIAL INDICATOR-Group 2

- Used to measure surface flatness as well as axial runout and also used to check tool set up and squareness.
- Limit indicator clips included.
- Strictly made in accordance with DIN878.
- Casting diameter: 58mm, shank diameter: 8mm
- Satin chrome plated steel case.

GROUP 2

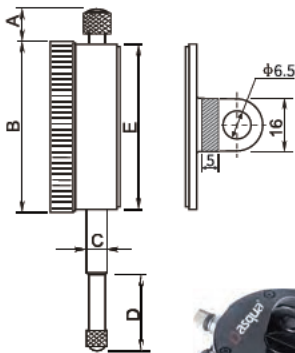
DIN

.0005" GRADUATION

3/8" Stem

4-48 Thread

0-0.5" Range
Item 5122-4205
Sale Price \$2670 (F)



SPECIFICATIONS:

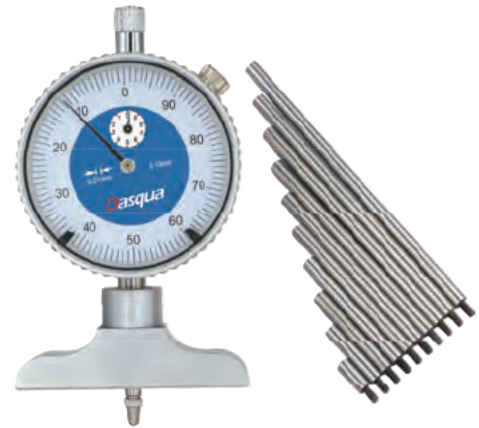
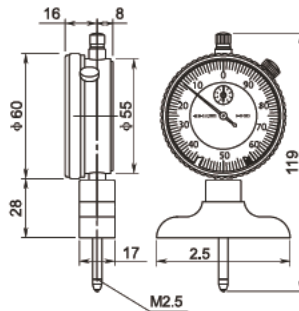
Range	Graduation	Style	(mm)					Accuracy
			A	B	C	D	E	
0-0.5"	0.0005"	lug back	10.5	58	Ø8	20.5	Ø53.5	0.0005"

2024 BUY IT NOW

Sale Ends Dec. 31, 2024

Dasqua® 0-22" DIAL DEPTH GAGE KIT

- Used to measure depth of holes or parts with grooved or elevated surfaces.
- Dial Indicator for easy and clear reading.
- Hardened base with fine lapped contact surface.
- Extension rods of different lengths offering larger measuring ranges.



.001" GRADUATION

0-22" Range
Item 5822-4100
Sale Price **\$10340** (F)

Dasqua® DIGITAL ELECTRONIC OUTSIDE MICROMETERS

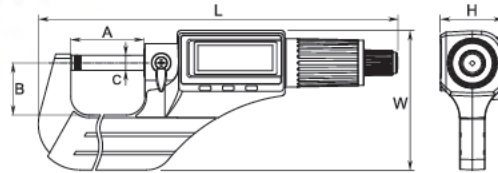
Battery CR2032
DIN 863
mm/in

- Large, easy-to-read digital display.
- Class A in electrostatic discharge.
- Carbide-tipped anvils.
- Measuring spindle hardened and ground.

- Extremely hardened stable one-piece spindle.
- Ratchet stop.
- Metric and Inch conversion.



Starting At
\$5562



REPLACEMENT BATTERY (ITEM #4102-0032).....Sale \$2.99

Item#	Range	Resolution	Dimensions (mm)						Accuracy	Sale (F)
			A	B	C	L	W	H		
4210-2105	0-1" / 0-25mm	0.00005" / 0.001 mm	31.5	22.5	Ø6.5	155	60.2	27.3	0.003mm/0.00015"	55.62
4210-2110	1-2" / 25-50mm	0.00005" / 0.001 mm	56.5	31	Ø6.5	185.4	77.9	27.3	0.003mm/0.00015"	72.53
4210-2115	2-3" / 50-75mm	0.00005" / 0.001 mm	81.5	44	Ø6.5	211.9	93.4	27.3	0.004mm/0.00015"	90.70
4210-2120	3-4" / 75-100mm	0.00005" / 0.001 mm	107.1	56	Ø6.5	239.9	111.4	27.3	0.004mm/0.00015"	106.97
4210-2125	4-5" / 100-125mm	0.00005" / 0.001 mm	132	66	Ø6.5	269.7	127.8	27.3	0.005mm/0.0002"	130.96
4230-2030	5-6" / 125-150mm	0.00005" / 0.001 mm	156.5	80	Ø6.5	296	145	27.3	0.005mm/0.0002"	163.80

Dasqua® DIAL INDICATOR WITH MAGNETIC BACK - GROUP 2

- Indicator strictly made in accordance with DIN 878.
- Permanent powerful magnet.
- Fitting for all group 2 dial indicator.
- Magnet screws off.
- Magnetic force: 20KG.
- Fitted case.

Magnetic Back Only
Item 5111-1010
Sale Price **\$887** (F)



GROUP 2

Magnetic Back with Indicator Kits

Item#	Indicator Included	Indicator Range	Graduation	Stem Dia	Sale (F)
5111-0001	5111-0000	0-10mm	0.01mm	8mm	45.35
5122-4211	5111-4210	0-1"	0.001"	3/8"	39.73

Sale Ends Dec. 31, 2024
2024 BUY IT NOW

IMTS SHOW SPECIAL
2024
BUY IT NOW
SAVE UP TO 15%

Fall / Winter Sale

Dasqua® DIGITAL ELECTRONIC OUTSIDE MICROMETERS WITH STAINLESS STEEL SPINDLE

- Spindle ground twice, reducing pitch error to less than 1", surpassing previous standards and reaching world class precision.
- Strictly made in accordance with **DIN863**
- Battery: CR2032

**EXTREME PRECISION
FOR ACCURATE MEASUREMENT!**



- Utilization of a new special carbide on the measuring anvil, replacing the traditional easily-worn carbide tip, ensuring prolonged durability.

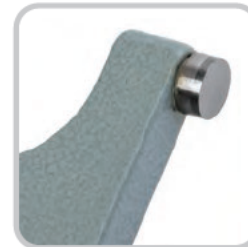


4230-2005 Shown

- Integration of stainless steel on the spindle instead of carbon steel, offering enhanced strength and corrosion resistance

- Equipped with a ratchet stop mechanism to maintain a constant force of 5 to 8 newtons, representing a 20% increase compared to standard models.

**INCH/METRIC
0.0005" RESOLUTION**



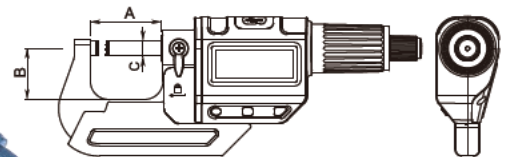
4230-2020 Shown



4230-2025 Shown



4230-2030 Shown



REPLACEMENT BATTERY (ITEM #4102-0032).....Sale \$2.99

Item#	Range	Resolution	(mm)			Accuracy	List	Sale (F)
			A	B	C			
4230-2005	0-1"/0-25mm	.00005"/.001mm	31.5	22.5	Ø6.5	.00012"/.003mm	89.89	80.90
4230-2010	1-2"/25-50mm	.00005"/.001mm	56.5	31	Ø6.5	.00012"/.003mm	114.71	103.24
4230-2015	2-3"/50-75mm	.00005"/.001mm	81.5	44	Ø6.5	.00016"/.004mm	140.06	126.05
4230-2020	3-4"/75-100mm	.00005"/.001mm	107.1	56	Ø6.5	.00016"/.004mm	162.76	146.48
4230-2025	4-5"/100-125mm	.00005"/.001mm	132	66	Ø6.5	.00020"/.005mm	196.25	176.63
4230-2030	5-6"/125-150mm	.00005"/.001mm	156.5	80	Ø6.5	.00020"/.005mm	230.05	207.05

2024 BUY IT NOW

Sale Ends Dec. 31, 2024

Dasqua® TAPER BORE GAGES -For Measuring Hole Diameter

- Made of polished stainless steel.
- Sizes engraved to last longer and read easily.

Overall Length: 7-1/2"



Mainly used to measure some deeper slots, holes and tube diameters.



Item#	Range	Graduation	Accuracy	Sale (F)
1051-0005	1 - 6.5mm	0.1mm	±0.05	47.16
1051-0008	3 - 15mm	0.1mm	±0.05	50.31

Dasqua® CIRCULAR TAPER BORE GAGES -For Measuring Small Holes

- Used to measure grooves and gaps or places that are hard to reach.
- Made of stainless steel
- Protective cap to cover the tip to avoid injuring the user.

Overall Length: 4.65"



Item#	Range	Graduation	Sale (E)
1051-2010	0.1-5mm	0.1mm	65.34

Dasqua® METRIC OUTSIDE MICROMETER

- Strictly made in accordance with DIN 863.
- With ratchet stop for constant pressure.
- Spindle thread hardened, ground and lapped for ultimate accuracy.
- Clear graduations laser-etched on satin chrome finish for easy reading.
- With spindle lock.
- Made with thermal protection frame.



DIN 863

Item#	Range	Graduation	Case	Sale (F)
4111-6405	0-25mm	0.01mm	Plastic Box	28.08

2024
BUY IT NOW
SAVE UP TO 15%

Fall / Winter Sale

Dasqua® 0.0001" 0-1" DIAL INDICATOR WITH FLAT BACK & LUG BACK

ULTRA PRECISION .0001" GRADUATION

GROUP 2

- Used to measure surface flatness as well as axial runout and also used to check tool set up and squareness.
- Lug back included.
- Strictly made in accordance with D1N878.
- Casting diameter: 58mm, shank diameter: 3/8"
- Satin chrome plated steel case.

0-1 INCH
~~List \$95.63~~
Item 5122-4245
Sale Price **\$86.07** (F)



EXTREME PRECISION FOR ACCURATE MEASUREMENT!

Dasqua® 6 PC (5/16 TO 6") 6 & 12" REACH TELESCOPING GAGE SETS - TIN COATED

- Durable action (self-centering) for quick checking of inside measurements.
- Great tool for easy and accurate measurements of the true sizes of holes and slots.
- Satin chrome finish.
- Rigid handle with self-centering feature.
- Constant spring tension for uniform feel & smooth operation.
- Contact plunger automatically self-centering at all times and in all positions.
- Contact point ends are hardened tool steel and precision ground on a radius of the smallest hole the gage will enter.
- Includes fitted case.



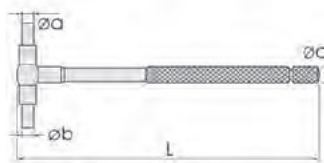
STANDARD SET SHOWN

TIN COATED FOR LONG TOOL LIFE!

Long Reach 6pc Set - 12" Length

(Inch) Range	L	Øa	Øb	Øc
5/16-1/2	12"	0.154	0.15	0.245
1/2-3/4	12"	0.207	0.15	0.245
3/4-1-1/4	12"	0.293	0.15	0.245
1-1/4-2-1/8	12"	0.293	0.23	0.28
2-1/8-3-1/2	12"	0.293	0.23	0.28
3-1/2-6.0	12"	0.293	0.23	0.28

TIN COATED



Standard Reach 6pc Set - Up to 5.35" Length

(Inch) Range	L	Øa	Øb	Øc
5/16-1/2	4.55	0.154	0.15	0.245
1/2-3/4	4.55	0.207	0.15	0.245
3/4-1-1/4	4.55	0.293	0.15	0.245
1-1/4-2-1/8	5.35	0.293	0.23	0.28
2-1/8-3-1/2	5.35	0.293	0.23	0.28
3-1/2-6.0	5.35	0.293	0.23	0.28

Item#	Set	Depth	List	Sale (F)
5911-0011	6PC Long Reach Set	up to 12"	75.83	68.25
5911-0012	6PC Standard Reach set	up to 5.35"	42.83	38.55

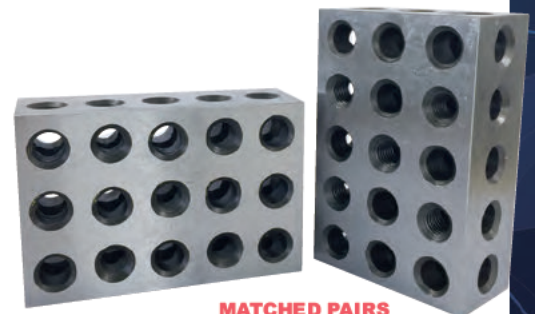
Dasqua® PRECISION 2-4-6 BLOCK SET

- 23 holes consists of 5 tapped holes that are 5/8"-11 for clamping and 18 untapped holes.
- Hardened and precision ground on all 6 sides of each block.

- Product Dimensions: 2x4x6".
- Heat treated and case hardened to HRC 58-62.
- Tolerance of size +/- 0.0002", Parallelism 0.0002", Height of pair 0.0002".
- Cross drilling design gives minimum weight and maximum strength.

SUPERIOR QUALITY

~~List \$148.23~~
Item 8407-0035
Sale Price **\$128.91** (F)
Wt. 19 Lbs.



MATCHED PAIRS SOLD AS PAIRS

2024 BUY IT NOW

Sale Ends Dec. 31, 2024

Dasqua® 12 PC TELESCOPING GAGE COMBO SET

- Durable action (self-centering) for quick checking of inside measurements.
- Great tool for easy and accurate measurements of the true sizes of holes and slots.
- Satin chrome finish.
- Rigid handle with self-centering feature.
- Constant spring tension for uniform feel & smooth operation.
- Contact plunger automatically self-centering at all times and in all positions.
- Contact point ends are hardened tool steel and precision ground on a radius of the smallest hole the gage will enter.
- Includes fitted case.



Standard Set
(Up To 5.85") Shown



Long Reach Set
(Up To 12") Shown

COMBO SET
FOR EASY ACCESS
TO MEASUREMENTS!

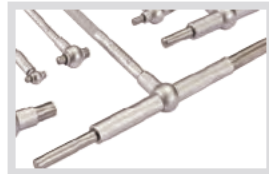
12PC Combo Set
Item 5911-9999
Sale Price **\$9715 (F)**

Standard 6pc Set

(Inch) Set Range	OAL
5/16-1/2	4.20
1/2-3/4	4.40
3/4-1-1/4	4.40
1-1/4-2-1/8	5.85
2-1/8-3-1/2	5.85
3-1/2-6.0	5.85

Long-Reach 6pc Set

(Inch) Set Range	OAL
5/16-1/2	12"/300mm
1/2-3/4	12"/300mm
3/4-1-1/4	12"/300mm
1-1/4-2-1/8	12"/300mm
2-1/8-3-1/2	12"/300mm
3-1/2-6.0	12"/300mm



Includes

Item#	Set	Range	Depth	Sale (F)
5911-0001	6PC Long Reach Set	5/16-1/2", 1/2-3/4", 3/4-1-1/4", 1-1/4-2-1/8", 2-1/8-3-1/2", 3-1/2-6"	up to 12"	64.89
5911-0002	6PC Standard reach set	5/16-1/2", 1/2-3/4", 3/4-1-1/4", 1-1/4-2-1/8", 2-1/8-3-1/2", 3-1/2-6"	up to 5.85"	38.03

Dasqua® .0005" GRADUATION DIAL BORE GAGE SETS

- Self centering.
- Carbide anvils.
- Easy-to-read.
- Insulated cover.
- Chrome plated handle.
- Includes extension holder and fitted case.



.0005" GRADUATION

5512-6130 Shown

The Biggest Measuring Range Set In Industry!
Two Popular Bore Gauge Ranges Combined In One Set!



Starting At **\$115.95**

Item#	Measuring Range	Depth Up to	Sale (F)
5512-6105	0.24-0.4"	1.55"	158.35
5512-6110	0.4-0.7"	4"	153.46
5512-6115	0.7-1.5"	6"	119.37
5512-6120	1.4-2.4"	6"	119.37
5512-6125	2-4"	6"	119.37
5512-6130	2-6"	6"	115.95
5510-0000	1.4-6"	6"	186.99

Sale Ends Dec. 31, 2024
2024 BUY IT NOW

IMITS SHOW SPECIAL
2024
BUY IT NOW
SAVE UP TO 15%

Fall / Winter Sale

Dasqua® SUPER POWER (80 kg/176 lb) MAGNETIC BASE WITH FINE ADJUSTMENT



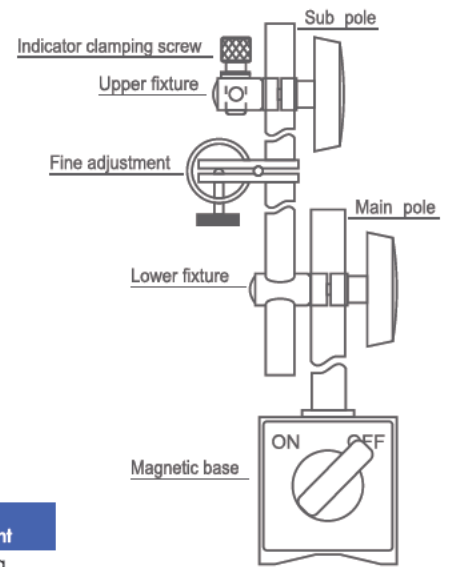
• With clamp holes of Ø4mm, Ø8mm, 3/8", which satisfy the use of most indicators, test indicators and scribes.

• Solid structure with surfaces electroplated and end-faces ground

• With fine adjustment device, which is heat-treated to ensure stability and durability.

• 176 lb. Holding Power

- 150° V-grooved base can be placed on the cylindrical surfaces as well as flat surfaces for easily fixing the indicators.
- Well selected ferrite permanent magnet with magnetic force greater than calibration value
- On/off switch for magnet, easy to move the base without the influence of magnetic force.



Item 7123-1005

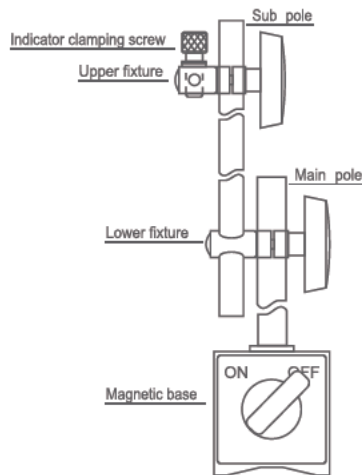
Sale Price **\$2491** (F)

SPECIFICATIONS:

Holding Power	(mm)				Weight
	Base	Main Pole	Sub Pole	Dia. of Clamp Hold	
80kg	60x50x55	Ø12x176	Ø10x150	Ø4 / Ø8 / Ø3/8"	1.5kg

Dasqua® STANDARD MAGNETIC BASE

- Solid structure with electroplated surfaces, precision ground end-faces
- With clamp holes of 4mm, 8mm & 3/8", which satisfy the use of most indicators, test indicators and scribes.
- 150° V-grooved base can be placed on the cylindrical surfaces for easily fixing the indicators
- Well selected ferrite permanent magnet with magnetic force greater than calibration value
- On/off switch for magnet, easy to move the base without the influence of magnetic force



176 lb. Holding Power

Item 7700-0010

Sale Price **\$2363** (F)

SPECIFICATIONS:

Holding Power	(mm)				Weight
	Base	Main Pole	Sub Pole	Dia. of Clamp Hold	
80kg	58x50x55	Ø12x177	Ø10x165	Ø4 / Ø8 / Ø3/8"	1.6kg

2024 BUY IT NOW

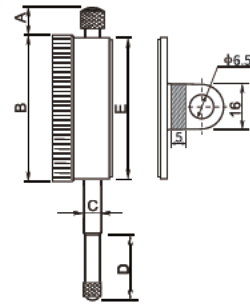
Sale Ends Dec. 31, 2024

Dasqua® DIAL INDICATORS-GROUP 2

- Used to measure surface flatness as well as axial runout and also used to check tool set up and squareness.
- Limit indicator clips included.
- Strictly made in accordance with DIN878.
- Jeweled bearings on 5122-4215 and 5122-4220 provide the lowest possible bearing friction.
- Casting diameter: 58mm, shank diameter: 8mm
- Satin chrome plated steel case.



.001" GRADUATION



GROUP 2

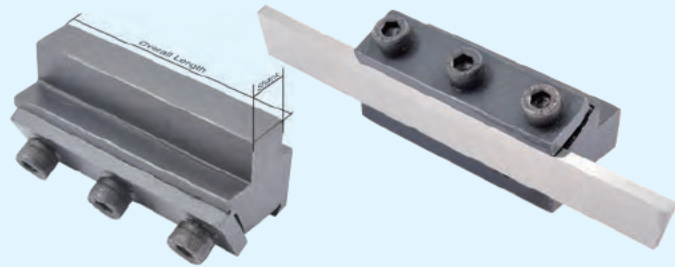
Starting At
\$2893

Replacement M2.5 x 0.45mm Point (Item #5260-9999).....\$1.42(F)

Item#	Range	Scale divisions	Style	(mm)					Accuracy	Protection Standard	Sale (F)
				A	B	C	D	E			
5122-4210	0-1"	0.001"	lug back	8.5	58	8	40.9	53.5	0.002"	No Jeweled Bearing	28.93
5122-4220	0-1"	0.001"	lug back	8.5	58	8	40.9	53.5	0.002"	Jeweled Bearing	55.81
5122-4214	0-2"	0.001"	lug back	79.3	58	8	57.7	53.5	0.004"	No Jeweled Bearing	46.89
5122-4215	0-2"	0.001"	lug back	79.3	58	8	57.7	53.5	0.004"	Jeweled Bearing	71.77

PARTING TOOL HOLDERS - For Smaller Tool Posts

- HHIP parting tool holder fits standard 4-way tool post.
- Steel construction for durability and stability during the cutting process.
- The parting tool holder allows for efficient and controlled cutting when used to hold a cut-off blade on a lathe.



CLAMP TYPE

Item#	Shank	Length	Blade Used	Sale (F)
3906-5371	3/8"	2-3/16"	3/32 x 1/2"	10.66
3906-5372	1/2"	2-3/16"	1/8 x 3/4"	10.66

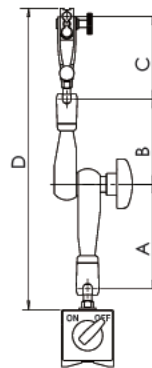
P-TYPE CUT-OFF BLADES FOR PARTING TOOL

Width	Height	Length	HSS Item#	Sale (F)	8% COBALT Item#	Sale (F)
3/32"	1/2"	4-1/2"	2000-6020	8.37	2000-7020	11.85
1/8"	3/4"	5"	2000-6050	12.27	2000-7050	16.73

Dasqua® LOCK'T MAGNETIC BASE

- All wear parts use hardened high grade steel and with hardness over HRC58.
- Inner structure is made of bearing steel, delivering more wear-resisting ability and longer service life.

Starting At
\$8525



Item#	Power Pull	Base Dimensions	Thread Mount	(mm)			Reach Length (D)	Sale (F)
				A	B	C		
7121-0020	50kg	40x40x40	M6x1.00	62	52	79	220	85.25
7121-0025	80kg	60x50x55	M8x1.25	100	82	81	290	92.01
7121-0030	100kg	74x50x55	M8x1.25	145	95	81	355	107.60

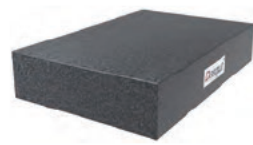
2024
LIMITS SHOW SPECIAL
BUY IT NOW
SAVE UP TO 15%

Fall / Winter Sale

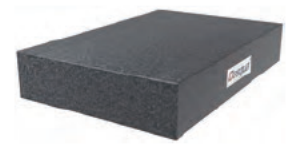
Dasqua® GRADE A(00) GRANITE SURFACE PLATES

DIN 876

- Meets DIN876, grade A(00) are used in metrology, which is the science of measurement.
- The top surface of this Dasqua surface plate is precision ground to achieve a high degree of flatness as shown in the chart.
- Granite surface plates meet or exceed Federal Specifications GGG-P-463C and it includes a certificate of inspection. (Note that these are not NIST traceable.)
- Granite plates are used for measuring the flatness and squareness of other objects, laying out parts, calibrating instruments, setting up tools, checking parallelism and perpendicularity, and measuring heights with the use of a height gage.
- They are also used as a work surface for assembling, inspecting, and marking parts. Non-magnetic and non-conductive. Harder than steel and does not nick or burr.
- Surface plates are offered by Dasqua in various sizes, with different levels of flatness and are checked by an autocollimator for overall accuracy assurance.

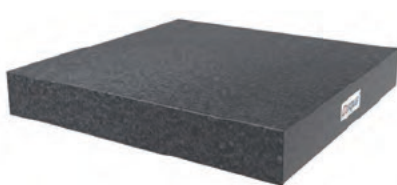


8500-3020 Shown

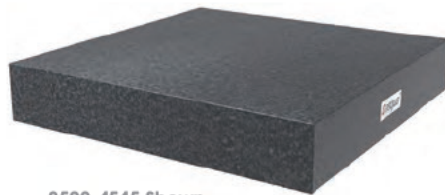


8500-4025 Shown

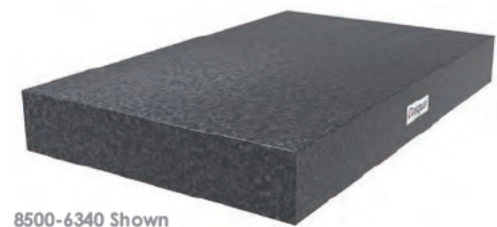
Grade A(00)



8500-4040 Shown

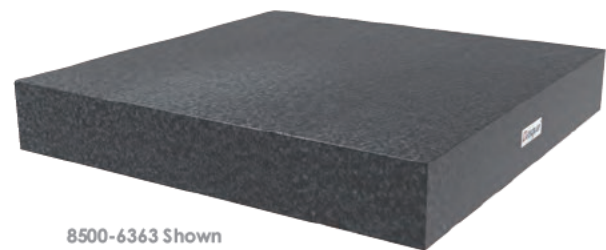


8500-4545 Shown



8500-6340 Shown

Item#	(mm) L x W x H	Flatness Grade A(00)	Weight (lbs.)	List	Sale (F)
8500-3020	300x200x60	0.0029mm	25	82.49	74.24
8500-4025	400x250x60	0.0029mm	41	117.50	105.75
8500-4040	400x400x60	0.0029mm	65	199.80	171.72
8500-4545	450x450x80	0.0031mm	111	233.73	210.36
8500-6340	630x400x80	0.0035mm	137	331.20	298.08
8500-6363	630x630x100	0.0038mm	269	524.70	472.23



8500-6363 Shown

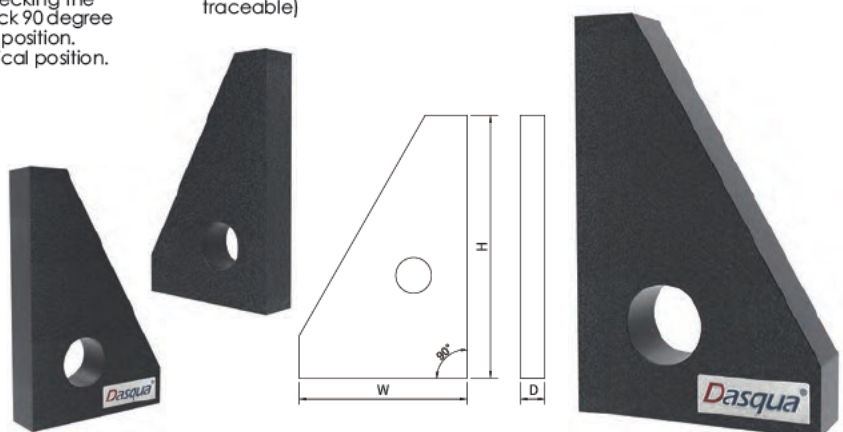
Dasqua® PRECISION GRANITE SQUARE 90°

- Dasqua precision granite square squareness is +/-0.0002mm.
- Squares are made from a solid block of granite that has been carefully machined to ensure accurate right angles.
- Granite precision squares come with one large face and two edges that are finished flat and square to each other. It consists of two faces precisely perpendicular to each other, forming a 90-degree angle.
- A precision granite square is a tool used specifically for checking the squareness (90° angle) between two surfaces or edges. Check 90 degree squareness of the X and Y axes when used in its horizontal position. Check perpendicularity of the Z axes when used in its vertical position.
- Dasqua precision granite squares are commonly used with other measurement tools to verify the squareness of various components and assemblies. They are particularly useful in applications where high accuracy and reliability in squareness measurements are required, such as in precision machining and tooling. Square has a round hole so it weighs less and is easier to handle.
- An inspection certificate from the manufacturer is provided (not NIST traceable)

List \$197.15
Item 9211-3005
Sale Price **\$177.43**
(F)

Grade A(00)

SPECIFICATIONS:		Unit: mm
Size (HxWxD)	Squareness between meaning surface and datumsurface	Grade
250x160x40	0.002	A(00)



2024 BUY IT NOW

Sale Ends Dec. 31, 2024

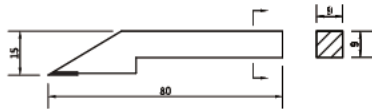
Dasqua®

DIGITAL ELECTRONIC DOUBLE-BEAM HEIGHT GAGE

- Heavy duty construction for industry use.
- Large LCD display.
- Zero-setting at any position.
- Double stainless beams assure high accuracy.
- Base is hardened, ground and lapped for maximum flatness.
- Carbide tipped scriber for sharp, clean lines.
- On/Off switch ABS/INC switchable and hold function.
- Micro-adjustable wheel for easy head displacement/precision positioning.



**INCH/METRIC
.0005"/.01MM
GRADUATION**



Replacement Scriber (Item# 3130-4115)....Sale \$24.42

Item#	Range	Accuracy	Sale (F)
3230-8105	0-12"/0-300mm	+/- 0.002"/0.04mm	467.44

Dasqua®

ABSOLUTE DIGITAL ELECTRONIC HEIGHT GAGE

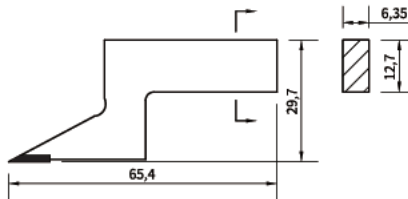
- Built-in absolute liner encoder, no need to set the reference point at every power-on.
- Carbide tipped scriber for sharp, clean lines.
- With SPC data output.
- Large, easy-to-read LCD display.
- Rigid, heavy duty beam and base.
- Made of stainless steel.



Absolute

Data output

mm/inch



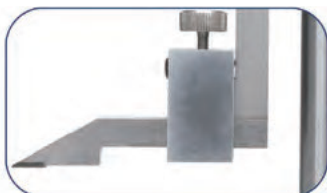
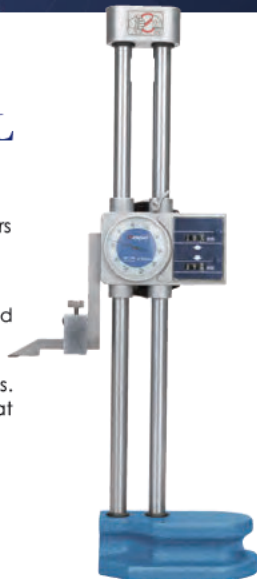
Replacement Scriber (Item# 3130-4115)....Sale \$24.42

Item#	Range	Resolution	Accuracy	Sale (F)
3130-8115	0-300/0-12"	0.01/0.0005"	±0.04	243.62

Dasqua®

DOUBLE-BEAM DIAL HEIGHT GAGE

- Provided with a dial and two digit counters for more accurate reading.
- Double-beam ensures higher measuring accuracy.
- One counter reads in the plus direction and the other reads in the minus direction.
- With a feed wheel on the back.
- Carbide tipped scriber for sharp, clean lines.
- Both counters and dial can be re-zeroed at any scriber position.
- Base hardened, ground and lapped for maximum flatness.
- Dustproof shield optional.



Item#	Range	Resolution	Graduation	Sale (F)
3222-4205	0-12"	0.001"	0.1"	273.87

THREAD DETECTIVE/IDENTIFIER - Inch & Metric

- Nut and bolt thread identifier. Each size has a nut and bolt checker on the same gauge.
- Inch nut and bolt sizes include #6-32, #8-32, #10-32, #10-24, 1/4-28, 1/4-20, 5/16-24, 5/16-18, 3/8-24, 3/8-16, 7/16-20, 7/16-14, 1/2-20 & 1/2-13
- Metric Nut and bolt sizes include M4x0.7, M5x0.8, M6x1.0, M7x1.0, M8x1.0, M8x1.25, M10x1.0, M10x1.25, M10x1.50, M12x1.25, M12x1.50 & M12x1.75
- Thread sizes are etched on each gauge
- The individual gauges rotate freely on the wire cable for fast thread verification
- Wire cable with loop for convenient hanging



~~List \$29.45~~
Item 4901-0035
Sale Price \$25.03 (F)



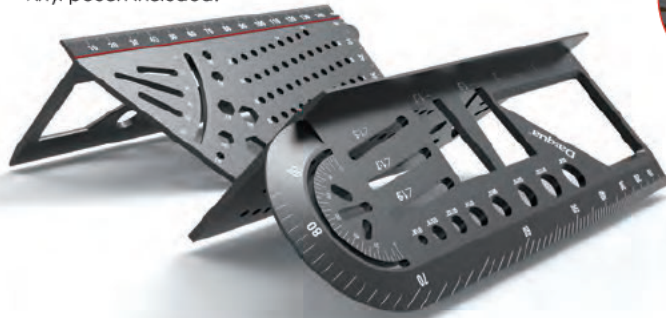
Sale Ends Dec. 31, 2024
2024 BUY IT NOW

2024
 BUY IT NOW
 SAVE UP TO 15%

Fall / Winter Sale

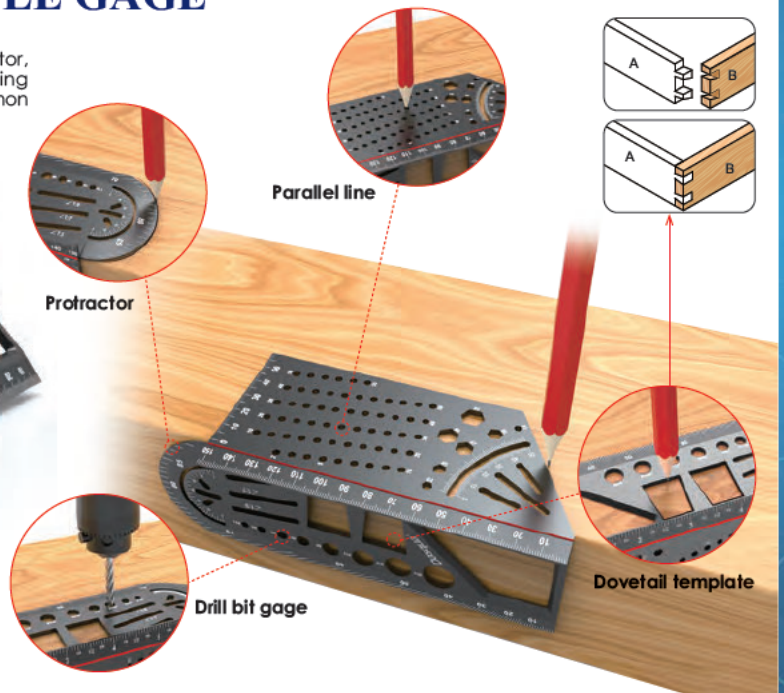
Dasqua® 45/90° ANGLE RULE GAGE

- The angle rule gage has more than 10 functions: square, protractor, dovetail template, circular hole, parallel line, vertical line, drilling positioning, T-shaped dovetail joint, 60° angle, 90° angle. Ten common angles to meet your different needs.
- High quality durable and rust-resistant aluminum alloy.
- CNC machined for precision and accuracy.
- Vinyl pouch included.



6" Rule Gage
~~List \$15.61~~
 Item 1804-1107
 Sale Price **\$14.05** (F)

Rule: 6" long



Protractor

Parallel line

Drill bit gage

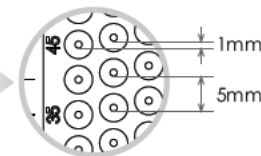
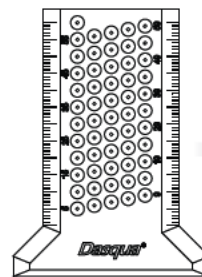
Dovetail template

Dasqua® POCKET MARKING RULES

- High quality durable and rust-resistant aluminum alloy
- The marking rule helps to mark precise, straight and parallel lines as needed.
- The holes are the perfect size to use with the included mechanical pencil for drawing different parallel lines
- Precision marking rule with 5mm hole distance and 1mm hole size.

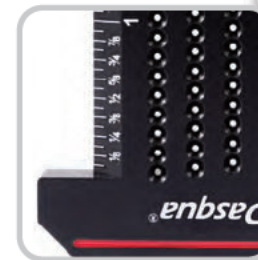
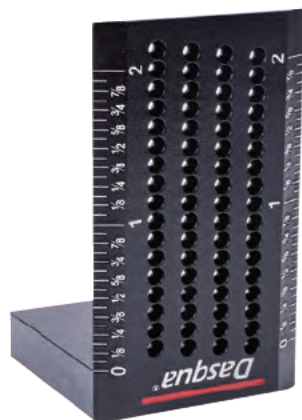


T-SHAPED RULE
~~List \$15.84~~
 Item 1804-5662
 Sale Price **\$14.26** (F)



Rule with 5mm hole distance and 1mm hole size

SQUARE RULE
~~List \$15.84~~
 Item 1804-5552
 Sale Price **\$14.26** (F)



2024 BUY IT NOW

Sale Ends Dec. 31, 2024

Dasqua® 15PC PRECISION SET-UP BLOCK SET

- CNC machined and blue anodized aluminum.
- Easy-to-read, laser-etched markings.
- Block Thickness Accuracy: 0.001"/0.025mm
- Set-up blocks are especially handy where space is limited or the area you are working in is obstructed.
- For a job that requires precise setups even in an accessible area.
- **Inch Set Dimensions:** 3x2x1/16, 3x2x3/32, 3x2x1/8, 3x2x5/32, 3x2x3/16, 3x2x7/32, 3x2x1/4, 3x2x5/16, 3x2x3/8, 3x2x7/16, 3x2x15/32, 3x2x1/2, 3x2x23/32, 3x2x3/4 & 3x2x1".
- **Metric Set Dimensions:** 75x12.5x1, 75x12.5x1.5, 75x12.5x2, 75x12.5x3, 75x12.5x4, 75x12.5x5, 75x12.5x6, 75x12.5x7, 75x12.5x8, 75x12.5x10, 75x12.5x12, 75x12.5x15, 75x12.5x18, 75x12.5x20 & 75x12.5x25mm
- Case included.



15PC Inch Set
~~List \$64.85~~
Item 1804-1610
Sale Price **\$5836** (F)
Range: 1/16"-1"

15PC Metric Set
~~List \$64.85~~
Item 1804-1605
Sale Price **\$5836** (F)
Range: 1-25mm



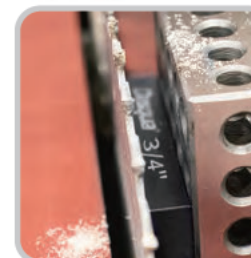
Dasqua® 6PC PRECISION SET-UP BLOCK & 1-2-3 BLOCK SET

- Mainly used for router table, drill press table and band saw fences.
- Blue anodized aluminum.
- Heat treated and case hardened to HRC 58-62.
- Set-up blocks for measuring distance and aligning machine fixtures into parallel.
- Woodworkers will find effective in positioning drill press components, table saw jigs and router fences.
- **Block Dimensions:** 2x1/2x1/16, 2x1/2x1/8, 2x1/2x1/4, 2x1/2x1/2, 2x1/2x3/4 & 2x1/2x1".
- **1-2-3 Block Accuracy:** 0.0002".
- Includes: 5 Set-up Blocks, 1-2-3 Block and Case.

6PC Combo Set
~~List \$32.93~~
Item 1804-1615
Sale Price **\$2964** (F)



CHECK ON STOCK THICKNESS WITHOUT A TAPE MEASURE



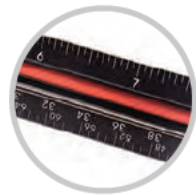
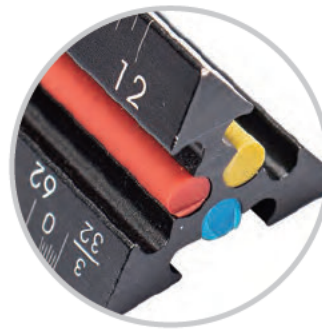
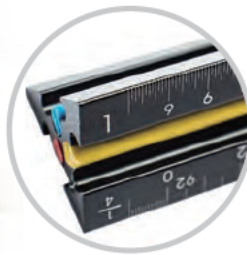
2024
BUY IT NOW
SAVE UP TO 15%

Fall / Winter Sale

Dasqua® 12" TRIANGULAR SCALE RULE

- Triangular architect's rule features 3 sides with 6 different scales.
- Professional grade for supreme accuracy.
- Color-coded grooves for quick and accurate selection of the desired scale.
- Made from high grade anodized aluminum.
- 3 Color Coded Sides: Red--1:100; 1:200; Yellow--1:500; 1:600, Blue--1:300; 1:400

12" RULE
~~List \$11.58~~
Item 1804-4405
Sale Price **\$10.46** (F)



Dasqua® 5PC MARKING & LAYOUT TOOL SET

Inch Multi-gage



- Made of tool steel with black coating
- Laser engraved markings.
- **7-IN-1 Combine:** Wire gage, Drill Sizes, Drill Point gage, Screw Pitch gage, Bore gage, Ruler & Protractor.
- Tap/Drill recommendation chart included.
- **Wire Gage:** 0.024-0.25"
- **Drill Sizes:** #5, 6, 8, 10, 12, 1/4", 5/16", 3/8", 7/16", 1/2", 9/16", 5/8" & 3/4".
- **Drill Points:** 60°, 90°, 118° & 135°.
- **Screw Pitch Gage:** 40th, 32nd, 24th, 20th, 18th, 16th, 14th, 13th, 12th, 11th & 10th TPI.
- **Bore Gage:** 1/64-1/2"
- **Rule:** 2-1/2" (32nds)
- **Protractor:** 15°, 30°, 45°, 60° & 90°
- 6-5/8" long x 3-1/2" wide.

Rafter Square



- Solid, one-piece aluminum body with CNC machined edges for accuracy and durability.
- Permanent graduations and numbers are easy to read.
- Thick edge makes for a safer saw guide.
- Mark and cut boards up to 12 inches wide.
- Complete instruction manual included with rafter tables.
- Anodized finish will not rust or corrode.
- With a protractor scale 0-90°.
- Increased heel width for cutting deck boards.
- Strong cast aluminium body with clear embossed imperial graduations and common rafter conversion table.

STRONG CARDBOARD BOX WITH FITTED FIRM FOAM INSERT



5PC SET
~~List \$56.07~~
Item 1804-1406
Sale Price **\$50.46** (F)

Combination Square 300mm/12"



- **Accuracy:** Aluminum precision machining and tight tolerances results in one of the best locking blades available.
- **Durability:** The strength and high corrosion resistance of aluminum ensures a product that will last a lifetime.
- Brass scribe and knurl nut.
- Deep etched graduations which will not wear out.
- Light weight and durable.

Engraving Pen



Center Square 4"x3"



- Made of hardened aluminium
- Scale has special laser-engraving.
- Scratch resistant with inch graduations.
- Enables the user to accurately locate the center of round stock, has a 90° right angle head with a rule at precisely at the center to give an accurate 45° use in location turning centers on square, or round stock as well as measures 90° for other squaring functions.



2024 BUY IT NOW

Sale Ends Dec. 31, 2024

Dasqua® 12" PRECISION MARKING T-RULE

- Special thin stainless steel, clear and accurate scale, CNC processing and comfortable texture.
- Horizontal line, vertical line, long line, short line, parallel, right angle, lets you draw the line as you like.

- Combination square for marking with perfect, instant accuracy.
- T-rules make it very easy to draw exact lines in either direction.
- Includes: T-rule, Pencil and Refill.

~~List \$24.12~~
Item 1804-5770
Sale Price **\$21⁷¹** (F)



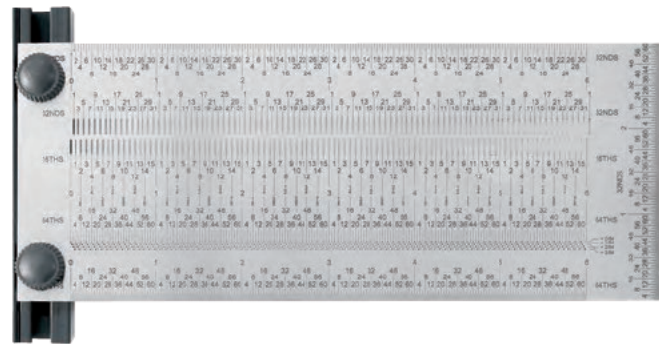
THIN-FLEXIBLE-PRECISE



Dasqua® 8" PRECISION WIDE MARKING T-RULE

- Special thin stainless steel, clear and accurate scale, CNC processing, and comfortable texture.
- Horizontal line, vertical line, long line, short line, parallel, right angle, lets you draw the line as you like.
- Combination square for marking with perfect, instant accuracy.
- T-rules make it very easy to draw exact lines in either direction.
- Marking pencil and refill included.

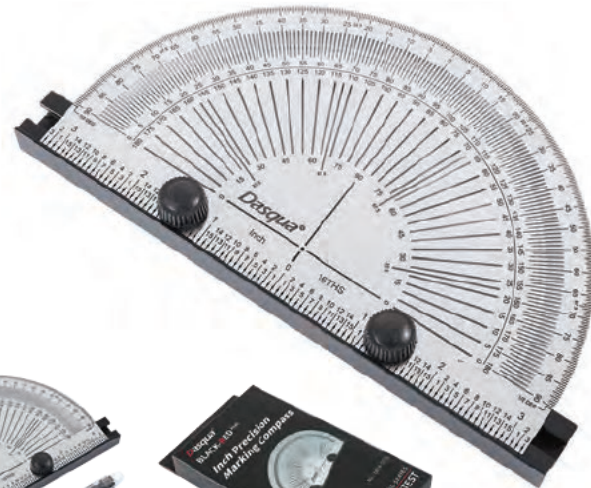
~~List \$24.12~~
Item 1804-5774
Sale Price **\$21⁷¹** (F)



Dasqua® 6" PRECISION MARKING PROTRACTOR

- Special thin stainless steel, clear and accurate scale, CNC processing, and comfortable texture.
- Horizontal line, vertical line, long line, short line, parallel, right angle, lets you draw the line as you like.
- Combination square for marking with perfect, instant accuracy.
- T-rules make it very easy to draw exact lines in either direction.
- Includes: Protractor, Pencil and Refill.

~~List \$24.12~~
Item 1804-5778
Sale Price **\$21⁷¹** (F)



2024
BUY IT NOW
SAVE UP TO 15%

Fall / Winter Sale

Dasqua® DRILL GUIDE (1/8~3/8x64THS)-17 HOLES

- Universal drill guide provides perpendicular alignment of drill bits on flat, round or square workpiece.
- Increments (SAE) drill sizes: 1/8, 9/64, 5/32, 11/64, 3/16, 13/64, 7/32, 15/64, 1/4, 17/64, 9/32, 19/64, 5/16, 21/64, 11/32, 23/64 & 3/8"
- Heat-treatment and electrophoresis provides durability & accuracy
- Heavy duty metal construction.

JUST LIKE A PORTABLE DRILL PRESS!!

CNC MACHINED

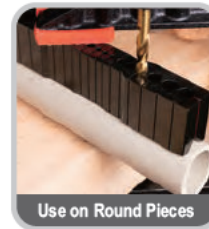
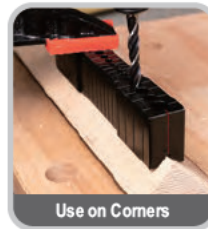
BLACK ANODIZED

~~List \$18.65~~
Item 1804-6333
Sale Price **\$16⁷⁸** (F)

LASER ENGRAVED SCALE



USE ON WOOD, PLASTIC, METAL & MORE!



Dasqua® 6PC PRECISION MULTI-FUNCTIONAL SQUARE SET

- Made of high-quality aluminum alloy with stainless-steel clamps for a durable set that protects against rust and corrosion providing you with long-term service.
- This set is used both professionally and DIY by clamping boxes, drawers, cabinets, frames. It is perfect for squaring up shelf cabinets and wood board jointing.
- Exact 90 degree angle.
- High accuracy laser marked scale.
- Perfect for wood board jointing.
- Includes: 2 Aluminum Angle Squares and 4 Clamp Blocks.

6PC SET
~~List \$35.24~~
Item 1804-6551
Sale Price **\$31⁷²** (F)

PRECISION SQUARE WITH ACCURATE CLAMPING FUNCTION!



Dasqua® MEASURING RULE WITH HOOK STOP

- CNC machined rule to make accurate measuring and layout quicker than ever.
- Made of solid aluminum alloy material, durable and not easy to break.
- Laser scale makes it easy to read and high precision.
- Hook stop design making it easy to use and convenient to operate.

INCH/METRIC

12" RULE
~~List \$21.05~~
Item 1804-6991
Sale Price **\$18⁹⁵** (F)

24" RULE
~~List \$37.36~~
Item 1804-6993
Sale Price **\$33⁶²** (F)



HOOK STOP

2024 BUY IT NOW

Sale Ends Dec. 31, 2024

Dasqua® 20PC BRASS FEELER GAGE FOR SPARK PLUGS

- Made from brass.
- Lock nut included.
- These feeler gauges suit many applications, from checking engine valve clearances to fine-tuning spark plug gaps and aligning mechanical systems with pinpoint accuracy.
- Their flexibility enables easy access to tight spaces, while the corrosion-resistant brass construction ensures long-lasting performance.
- Each gauge is clearly marked with measurements in inches.
- Engineered for mechanics and engineers alike, our feeler gauges guarantee optimal tolerances during assembly or maintenance tasks.

20PC SET	
List \$29.63	
Item	1620-0100
Sale Price	\$26.67 (F)

Sizes included:
0.05, 0.10, 0.15, 0.20, 0.25, 0.30, 0.35, 0.40, 0.45, 0.50, 0.55, 0.60, 0.65, 0.70, 0.75, 0.80, 0.85, 0.90, 0.95, 1.00"

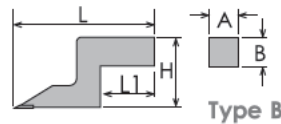


NON MAGNETIC



Dasqua® CARBIDE SCRIBER FOR HEIGHT GAGES

- Equipped with a durable carbide tip for extended wear resistance; Provides longer tool life compared to conventional steel or HSS scribers.
- Designed to fit height gage clamps with compatible dimensions.
- Manufactured to high tolerances for accurate scribing and marking.
- Suitable for use on various materials including metals, glass, ceramics, and more.



Unit: Inch

Scriber Item#	Type	L	L1	H	A	B	List	Sale (F)
3130-4103	B	2.57	1.6	1.2	0.25	0.50	27.65	24.89

SOLID SOCKETS WITH MORSE TAPER HOLES

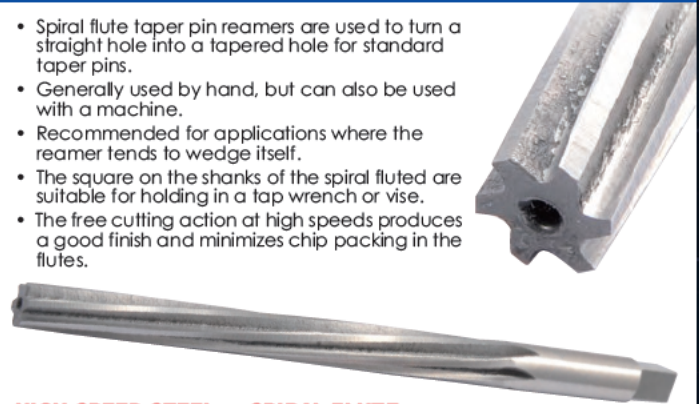
- Made of high quality tool steel.
- Solid sockets with Morse taper holes are used to adapt Morse taper tools to straight turrets. The size of the socket is dictated by the machine it is used on. A larger taper might be a better choice if adapters are available to use a smaller taper in a larger socket.



Item#	Inside Morse Taper	Socket O.D.	Socket OAL	List	Sale (F)
3700-0331	1MT	1	3-1/2	8.12	6.90
3700-0332		1-1/4		9.36	7.96
3700-0333		1-1/2		10.20	8.67
3700-0335	2MT	1	4	9.88	8.40
3700-0336		1-1/4		10.92	9.28
3700-0337		1-1/2		11.24	9.55
3700-0338		1-3/4		13.12	11.15
3700-0339		2		16.24	13.80
3700-0341	3MT	1-1/4	4-3/4	14.36	12.21
3700-0342		1-1/2		16.88	14.35
3700-0343		1-3/4		18.12	15.40
3700-0344		2		20.64	17.54
3700-0346		1-1/2		20.00	17.00
3700-0347		1-3/4		23.76	20.20
3700-0348	4MT	2	6	28.12	23.90

HSS SPIRAL FLUTE TAPER PIN REAMERS

- Spiral flute taper pin reamers are used to turn a straight hole into a tapered hole for standard taper pins.
- Generally used by hand, but can also be used with a machine.
- Recommended for applications where the reamer tends to wedge itself.
- The square on the shanks of the spiral fluted are suitable for holding in a tap wrench or vise.
- The free cutting action at high speeds produces a good finish and minimizes chip packing in the flutes.



HIGH SPEED STEEL • SPIRAL FLUTE

Item#	Size	(Inch) Shank Dia.	Small End Dia.	Large End Dia.	Flute Length	Overall Length	List	Sale (F)
2006-2122	7/0	5/64	.0497	.0666	13/16	1-13/16	9.00	7.65
2006-2123	6/0	3/32	.0611	.0806	15/16	1-15/16	9.00	7.65
2006-2124	5/0	7/64	.0719	.0966	1-3/16	2-3/16	9.00	7.65
2006-2125	4/0	1/8	.0869	.1142	1-5/16	2-5/16	9.00	7.65
2006-2126	3/0	9/64	.1029	.1302	1-5/16	2-5/16	9.00	7.65
2006-2127	2/0	5/32	.1137	.1462	1-9/16	2-9/16	9.00	7.65
2006-2128	0	11/64	.1287	.1638	1-11/16	2-15/16	9.00	7.65
2006-2129	#1	3/16	.1447	.1798	1-11/16	2-15/16	7.50	6.38
2006-2130	#2	13/64	.1605	.2008	1-15/16	3-3/16	9.00	7.65

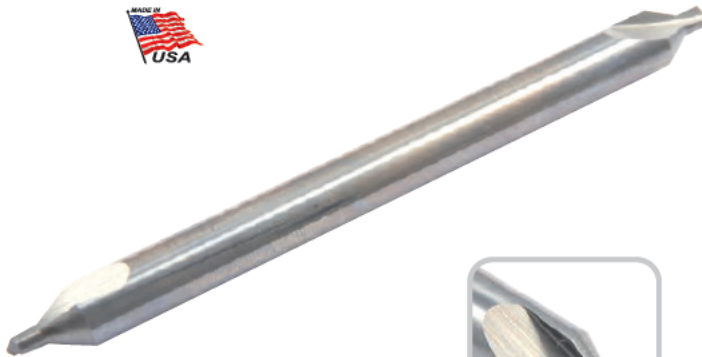
Sale Ends Dec. 31, 2024
2024 BUY IT NOW

INTS SHOW SPECIAL
2024
BUY IT NOW
SAVE UP TO 15%

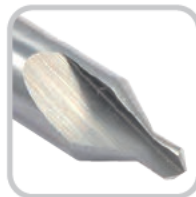
Fall / Winter Sale

SOLID CARBIDE LONG CENTER DRILL & COUNTERSINKS 60°

- Plain style.
- Solid carbide 60° long center drills and countersinks offer durability, precision, and versatility, making them essential tools for achieving accurate hole preparation and machining operations in metalworking and manufacturing environments



SOLID CARBIDE



- Used for centering work ends, where the workpiece is to be revolved on machine centers, 60° countersink angle fits all standard centers.
- A combined center drill is a tool that can both drill and countersink a hole in one operation. It can be used to create a tapered feature in the end of a part or stock to provide a secure contact point for a live or dead center. The straight pilot drill section starts the hole, and provides clearance for the point of the center, so it does not contact the bottom of the hole.
- Ideal for chamfering or spot drilling.



60°

Item#	Size	Body Dia.	(Inch) Drill Dia.	OAL	List	Sale (E)
5001-0025	1	1/8	3/64	4	41.60	37.44
5001-0030	2	3/16	5/64	4	53.88	48.49
5001-0032	3	1/4	7/64	4	66.18	59.56
5001-0035	4	5/16	1/8	4	87.53	78.77
5001-0040	5	7/16	3/16	6	143.45	129.11
5001-0043	6	1/2	7/32	6	195.25	175.73

METRIC HSS COMBINED DRILL & COUNTERSINK 60°

- Made of high speed steel and ground.
- Plain style.
- Used for centering work ends, where the workpiece is to be revolved on machine centers, 60° countersink angle fits all standard centers.
- A combined center drill is a tool that can both drill and countersink a hole in one operation. It can be used to create a tapered feature in the end of a part or stock to provide a secure contact point for a live or dead center. The straight pilot drill section starts the hole, and provides clearance for the point of the center, so it does not contact the bottom of the hole.
- Ideal for chamfering or spot drilling.

HIGH SPEED STEEL
GROUND FROM SOLID



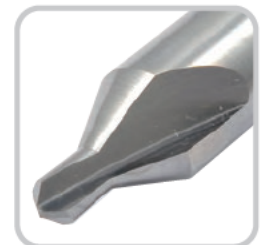
60°

Item#	Size	(MM) Body Dia.	OAL	List	Sale (F)
5000-2252	1.0	3.15	31.5	1.24	1.05
5000-2256	2.0	5.0	40	1.44	1.22
5000-2257	2.5	6.3	45	1.74	1.48
5000-2260	3.0	8	50	2.31	1.96
5000-2261	3.15	8	50	2.31	1.96
5000-2264	4.0	10	56	3.72	3.16
5000-2266	5.0	12.5	63	5.19	4.41

CARBIDE COMBINED DRILL & COUNTERSINK 60°

- Plain style.
- Solid carbide 60° center drill and countersinks are essential tools for achieving accurate hole preparation and machining operations in metalworking and manufacturing environments. Their combination design, precision cutting capabilities, durability, and versatility make them indispensable for professionals seeking high-quality results.
- Used for centering work ends, where the workpiece is to be revolved on machine centers, 60° countersink angle fits all standard centers.
- A combined center drill is a tool that can both drill and countersink a hole in one operation. It can be used to create a tapered feature in the end of a part or stock to provide a secure contact point for a live or dead center. The straight pilot drill section starts the hole, and provides clearance for the point of the center, so it does not contact the bottom of the hole.
- Ideal for chamfering or spot drilling.

SOLID CARBIDE



60°

Item#	Size	Body Dia.	(Inch) Drill Dia.	OAL	List	Sale (E)
5001-2025	00	1/8	.025	1-1/2	21.38	19.24
5001-2031	0	1/8	1/32	1-1/2	20.40	18.36
5001-2047	1	1/8	3/64	1-1/2	29.05	18.05
5001-2078	2	3/16	5/64	2	29.60	26.64
5001-2109	3	1/4	7/64	2	32.70	29.43
5001-2125	4	5/16	1/8	2-1/8	45.35	40.82
5001-2187	5	7/16	3/16	2-3/4	84.88	76.39
5001-2218	6	1/2	7/32	3	116.63	104.96

2024 BUY IT NOW

Sale Ends Dec. 31, 2024

CARBIDE SINGLE FLUTE COUNTERSINKS 82°

- Single flute 82° countersinks with a solid carbide head offer precision, durability, and versatility for a wide range of chamfering and countersinking applications in both metalworking and woodworking industries.
- Single flutes will countersink holes much smaller than multi-flute tools.
- Ideal for chamfering.



SOLID CARBIDE HEAD



82°

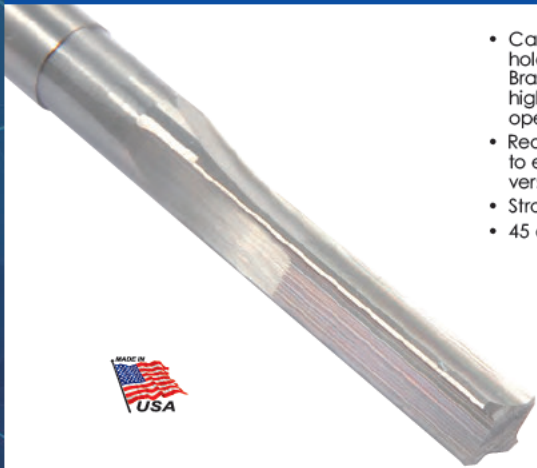
Item#	Diameter Body	Dia. of Shank	OAL Approx.	List	Sale (E)
2002-0250	1/4	1/4	2	29.05	26.15
2002-0375	3/8	1/4	2	48.08	43.27
2002-0500	1/2	1/4	2-1/2	68.50	61.65
2002-0626	5/8	1/2	2-3/4	85.73	77.15
2002-0750	3/4	1/2	3	141.08	126.97
2002-1000	1	1/2	3	186.30	167.67

CARBIDE STRAIGHT SHANK CHUCKING REAMERS

- Carbide reamers are cutting tools used in machining and metalworking to enlarge, shape, or finish holes in various materials, especially metals, including steel and alloys up to RC40, Stainless, Aluminum, Brass, Bronze, and Plastics. They are designed for precision hole-making in tough materials such as high-strength steels, stainless steels, and other alloys. Carbide reamers are typically used in machining operations where a high level of accuracy and surface finish is required.
- Reamers with a solid carbide head are precision cutting tools used primarily in metalworking applications to enlarge and finish drilled holes to a specific size and tolerance. Offers precision, durability, and versatility for enlarging and finishing drilled holes to precise dimensions in metalworking applications.
- Straight flute.
- 45 degree lead chamfer allows gradual starting load.



**CARBIDE HEAD
STRAIGHT FLUTE**



Item#	Size	Flute Length	OAL	List	Sale (E)
2006-5004	1/16	3/8	1-1/2	28.20	25.38
2006-5007	1/8	5/8	2-1/4	29.13	26.21
2006-5010	5/32	3/4	2-1/2	37.45	33.71
2006-5012	3/16	7/8	2-3/4	45.18	40.66
2006-5014	7/32	1	3	49.28	44.35
2006-5015	15/64	1	3	51.00	45.90
2006-5016	1/4	1	3	49.68	44.71
2006-5020	5/16	1-1/8	3-1/4	68.45	61.61
2006-5024	3/8	1-1/4	3-1/2	82.05	73.85
2006-5028	7/16	1-3/8	4	121.15	109.04
2006-5032	1/2	1-1/2	4	149.00	134.10
2006-5036	9/16	2-1/4	5	308.60	277.74
2006-5040	5/8	1-3/4	4	231.73	208.55
2006-5044	11/16	1-3/4	4	425.40	382.86
2006-5048	3/4	1-3/4	4	435.08	391.57



**2024
BUY IT NOW
SAVE UP TO 15%**

Fall / Winter Sale

HSS 3-FLUTE COUNTERSINKS & SETS

Ideal for countersinking screw and rivet heads, providing a flush and professional finish. Suitable for woodworking, metalworking, and general machining.

Diverse Chamfering Options:

Available in 60, 82, and 90 degrees, providing versatility for chamfering applications.

Optimized Chamfering:

- **60°:** Quick chamfering, ideal for softer materials.
- **82°:** Balanced performance across various materials.
- **90°:** Stronger chamfer, suitable for harder materials.

3-Flute Design:

Reduces chatter, ensuring smooth and precise cutting.

5 PC. SETS:
1/4, 3/8, 1/2, 3/4 & 1"
Wood Stand Included

Degree	Item#	Sale (F)
60°	2001-2004*	58.95
82°	2001-2005	58.95
90°	2001-2006*	58.95

* NEW



2001-2004 Shown

2001-2005 Shown

2001-2006 Shown

HIGH SPEED STEEL

INDIVIDUALS (Inch)

82° Item#	Diameter Cutter	Shank	OAL Approx.	Sale (F)
2001-1250	1/4	3/16	1-1/2	6.37
2001-1375	3/8	1/4	1-3/4	7.57
2001-1500	1/2	3/8	2	9.97
2001-1625	5/8	3/8	2-1/4	15.98
2001-1750	3/4	1/2	2-5/8	20.96
2001-2000	1	1/2	2-3/4	27.91



HSS 82° 6-FLUTE COUNTERSINKS & SETS

- Efficient 82° angle for balanced chamfering.
- 6-flute design for reduced chatter and improved surface finish.
- Provides maximum rigidity with relatively short cutters.
- Used for precise countersinks in holes
- Ideal for countersinking screw and rivet heads with precision.
- Versatile sets for woodworking, metalworking, and general machining.
- Wood stand included.
- **5 Pc Set includes:** 1/4, 3/8, 1/2, 3/4, 1". Sizes cover a range of common hole dimensions.
- **8 Pc Set Includes:** 1/4, 5/16, 3/8, 1/2, 5/8, 3/4, 7/8 & 1". Comprehensive set with additional sizes for a wider range of hole dimensions. Efficient for countersinking in diverse applications.

8 PC SET
Item **2001-3001**
Sale Price **\$11216 (F)**



HIGH SPEED STEEL • RIGHT HAND

INDIVIDUALS (Inch)

Item#	Diameter Cutter	Shank	Overall Length	Sale (F)
2001-3187	3/16	3/16	1-1/2	5.64
2001-3250	1/4	1/4	1-1/2	5.09
2001-3312	5/16	1/4	1-3/4	6.06
2001-3375	3/8	1/4	1-3/4	7.34
2001-3500	1/2	1/4	2-1/8	9.86
2001-3625	5/8	1/2	2-3/8	10.90
2001-3750	3/4	1/2	2-11/16	18.37
2001-3875	7/8	1/2	2-13/16	20.80
2001-4000	1	1/2	2-13/16	24.87
2001-4250	1-1/4	3/4	3-3/8	41.41
2001-4500	1-1/2	3/4	3-1/2	62.86
2001-4750	1-3/4	1	4-1/4	79.99
2001-4999*	2	1	4-3/8	60.15

* Limited Supply



5 PC SET
Item **2001-3000**
Sale Price **\$5798 (F)**

2024 BUY IT NOW

Sale Ends Dec. 31, 2024

Pro-Series 58PC STEEL CLAMPING KITS

- Fits milling machines, tables & machines with T-slots.
- Made of powdered casting steel for stronger strength.
- All parts heat treated.
- Plastic rack included.

HIP
PRO-SERIES

SET 3900-0001
Shown

Item#	Table Slot	Stud Size	Sale (F)
3900-2110	3/8"	5/16"~18	64.29
3900-0002	1/2"	3/8"~16	65.31
3900-2112	7/16"	3/8"~16	64.71
3900-0001*	5/8"	1/2"~13	73.35
3900-0003	3/4"	5/8"~11	123.98

5/8" T-Slot
~~List \$86.29~~
Item 3900-0001
Sale Price **\$73.35** (F)



* T-SLOT CLEANER & WRENCH INCLUDED

Each Kit Contains						
24	4	6	6	6	12	1
Studs 4 of ea. 3", 4", 5", 6", 7", 8" long	Coupling units	Flange nuts	Forged steel step clamps 2 ea. based on stud sets	T-Nuts	Steel step blocks	Wall rack

3 FLUTE METRIC SOLID PILOT COUNTERBORES & SET - STRAIGHT SHANK



HIGH SPEED STEEL

- Continuous pilot counterbores cut rapidly, smoothly and accurately, producing long spiraling chips rather than small metal particles.
- The pilot extends the full length of the flute portion of the tool.
- As cutter flutes are ground back due to wear, a new section of pilot becomes exposed.
- The pilot head may be cut off to any desired length when repeated sharpening make it too long for practical use.
- Continuous pilot counterbores have a life many times that of the conventional type counterbore.



INDIVIDUALS

Cap Screw	Cutter Dia.	(mm) Pilot Dia.	Shank Dia.	OAL	Item#	List	Sale (F)
M3	6.0	3.4	5.0	71	2007-0051	12.64	10.74
M3.5	6.5	3.7	5.0	71	2007-0053	14.33	12.18
M4	8.0	4.5	5.0	71	2007-0055	14.33	12.18
M5	10.0	5.5	8.0	80	2007-0057	15.11	12.84
M6	11.0	6.6	8.0	80	2007-0060	15.20	12.92
M8	15.0	9.0	12.5	100	2007-0062	20.02	17.02
M10	18.0	11.0	12.5	100	2007-0064	25.29	21.50
M14	24.0	16.0	12.5	100	2007-0068	32.01	27.21

7PC HSS CHUCKING REAMER SET

• HIGH SPEED STEEL • STRAIGHT SHANK • STRAIGHT FLUTES

- Chucking reamers are general-purpose cutting tools that are used for lathes or drill presses. Straight flutes and a solid shank allows them to be securely held in the chuck of a machine.
- Chucking reamers are often used when high accuracy and a smooth finish are required.
- Used in general purpose through-hole applications.
- Used for reaming holes without interrupted cuts.
- High speed steel.
- Straight shank.
- Straight flutes.



7PC Set
~~List \$82.80~~
Item 2006-0007
Sale Price **\$70.38** (F)
1/8"~1/2" x 16ths



HIGH SPEED STEEL

7pcs Includes: 1/8, 3/16, 1/4, 5/16, 7/16 & 1/2"

2024
BUY IT NOW
SAVE UP TO 15%

Fall / Winter Sale

6PC TAPER PIPE (NPT) TAP SET

This HHIP 6 pc taper pipe tap set is made of carbon steel covering a size range of 1/8 to 1 inch, offering versatility and durability for various pipe threading applications.



- **Tap Size Range:** Provides a comprehensive solution for various pipe threading needs.
- **Taper Rate:** Designed with a 3/4 inch per foot taper rate for gradual threading, ensuring a secure and leak-resistant pipe connection.
- **Material:** Crafted from carbon steel, ensuring longevity and reliability in challenging working conditions.
- **Versatile Applications:** Ideal for a wide range of applications requiring NPT threads, from plumbing to industrial pipe fitting.
- **Fitted Case:** included

6 PC SET
Item 1011-3307
Sale Price **\$56.07** (F)
Includes: 1/8~27, 1/4~18, 3/8~18, 1/2~14, 3/4~14 & 1~11-1/2

GROUND THREAD • CARBON STEEL

HSS SINGLE FLUTE COUNTERSINKS & SETS

These HHIP HSS single flute countersinks and sets offer versatility, efficiency, and durability, making them especially suitable for portable machine work and applications involving smaller holes.

Material:

Crafted from durable high speed steel (HSS) for longevity and efficient cutting performance.

Single Flute Design:

Single flute for clean and precise cutting, suitable for deburring and chamfering.

Optimized for Smaller Holes:

The single-flute design allows for countersinking smaller holes compared to multi-flute tools.

Efficient Chip Evacuation:

Single flute design aids in efficient chip evacuation during cutting.



5 PC. SETS:
1/4, 3/8, 1/2, 3/4 & 1"

Degree	Item#	Sale (F)
60°	2000-0030	45.17
82°	2000-0031	51.09
90°	2000-0032	53.13

HIGH SPEED STEEL

Versatile Countersinks:

Ideal for various materials, including metals, wood, and plastics.

Various Sizes:

Available in a variety of sizes to accommodate different hole dimensions.

Diverse Chamfering Options:

Available in 60°, 82° and 90°, providing flexibility for your chamfering needs.

Advantages of Angle Options:

- **60°:** Enables quick chamfering, ideal for softer materials.
- **82°:** Offers balanced performance across a wide range of materials.
- **90°:** Provides a stronger chamfer, suitable for harder materials.

Professional and DIY Use:

Suitable for professional machining applications and DIY projects.



INDIVIDUALS (Inch)

Diameter Body	Dia. of End	Dia. of Shank	OAL Approx.	60° Item#	82° Item#	90° Item#	Sale (F)
1/4	1/32	1/4	2	2001-0241	2001-0250	2001-0802	4.00
3/8	1/32	1/4	2	2001-0242	2001-0375	2001-0803	6.43
1/2	1/32	1/4	2	2001-0243	2001-0500	2001-0804	8.76
5/8	1/32	3/8	2-1/4	2001-0244	2001-0625	2001-0805	10.66
3/4	1/8	1/2	2-3/4	2001-0245	2001-0750	2001-0806	15.02
1	1/8	1/2	2-3/4	2001-0246	2001-1000	2001-0807	24.39
1-1/4	3/32	3/4	3	2001-0247	2001-1001	2001-0808	49.42

2024 BUY IT NOW

Sale Ends Dec. 31, 2024

HSS METRIC T-SLOT CUTTERS

- High speed steel.
- Rugged design with free cutting features.
- Cutters have positive radial rake, right and left hand spiral with alternate side cutting teeth for maximum chip clearance.
- **Purpose-Built Design:** Tailored for the precise cutting of t-slots.
- **Ideal for Milling Machines:** Optimized for use with milling machine to ensure accurate t-slot creation in metalwork.



HIGH SPEED STEEL

INDIVIDUALS (Metric)

Bolt Size	Cutter Dia.	Cutter Width	Neck Dia.	Shank Dia.	OAL	Number of Teeth	Item#	Sale (F)
8	16	8	7	10	62	6	2006-0184	17.77
14	25	11	12	16	82	8	2006-0187	35.85

HSS SPIRAL FLUTE TAPER PIN REAMERS

- Spiral flute taper pin reamers are used to turn a straight hole into a tapered hole for standard taper pins.
- Generally used by hand, but can also be used with a machine.
- Recommended for applications where the reamer tends to wedge itself.
- The square on the shanks of the spiral fluted are suitable for holding in a tap wrench or vise
- The free cutting action at high speeds produces a good finish and minimizes chip packing in the flutes

HIGH SPEED STEEL



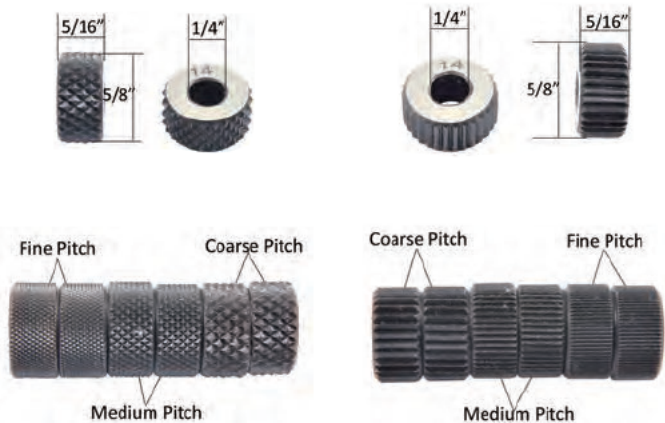
INDIVIDUALS (Inch)

Item#	Size	Shank Dia.	Diameter		Flute Length	OAL	Sale (F)
			Small End	Large End			
2006-2131	#3	15/64	.1813	.2294	2-5/16	3-11/16	7.65
2006-2132	#4	17/64	.2071	.2604	2-9/16	4-1/16	8.29
2006-2133	#5	5/16	.2409	.2994	2-13/16	4-5/16	9.14
2006-2134	#6	23/64	.2773	.3540	3-11/16	5-7/16	12.33
2006-2135	#7	13/32	.3297	.4220	4-7/16	6-5/16	16.79
2006-2136	#8	7/16	.3971	.5050	5-3/16	7-3/16	24.01
2006-2137	#9	9/16	.4805	.6055	3-1/16	8-5/16	35.28
2006-2138	#10	5/8	.5799	.7216	6-13/16	9-5/16	46.96

KNURLING WHEEL REPLACEMENT SETS

- Versatile and easy-to-use, these knurling wheel sets offer different patterns for diverse applications, enhancing the functionality and appearance of machined surfaces.
- **Thickness:** 5/16" wide.
- **Packaging:** Sold in pairs.
- **Patterns:** Available in Coarse, Medium, Fine, Diamond Pattern, and Straight Pattern.
- **Uses:** Ideal for adding textured patterns to workpieces for improved grip or aesthetic appeal.
- **How They Work:** The knurling wheels engage with the work piece surface. As pressure is applied, the wheels create the selected pattern through a rolling process. Patterns vary in aggressiveness, providing options for different applications.
- **Variety:** Coarse, Medium, and Fine for varying degrees of texture. Diamond Pattern for a unique surface finish. Straight Pattern for linear knurling effects.

SOLD IN PAIRS



Pitch	TPI	Diamond Item#	Per Pair Sale (F)	Straight Item#	Per Pair Sale (F)
Coarse	14	2220-0314	2.98	2220-0114	2.98
Medium	21	2220-0316	2.98	2220-0116	2.98
Fine	33	2220-0318	2.98	2220-0118	2.98

Dimensions

Diameter		Thickness		Bore	
Inch	mm	Inch	mm	Inch	mm
5/8	16	5/16	7.90	1/4	6.35

Sale Ends Dec. 31, 2024

2024 BUY IT NOW

2024
BUY IT NOW
SAVE UP TO 15%

Fall / Winter Sale

SQUARE SHOULDER MT3 INDEXABLE END MILL - Accepts APKT(10mm) Carbide Inserts

- 90° square shoulder milling.
- Used for slotting and peripheral milling.
- Uses standard APKT-1003 inserts (included).
- Cost effective.
- Drawbar Thread: M12x1.75



SQUARE SHOULDER

Item#	Cutter Dia.	Shank Dia.	MT	OAL	No of Inserts	Use Insert	Screw	Torx Wrench	Sale (F)
5896-1022	25	MT3	128	3	APKT1003	M2.5x6	T8		40.38



INSERT - Replacement

Item #	Size	Sale (F)
6010-4203	APKT1003	10.58

SCREWS - Replacement

Item #	Size	Sale (F)
2100-0070	M2.5x6	3.09

TORX WRENCH - Replacement

Item #	Size	Sale (F)
2100-0092	T8	2.64

BELL PUNCH CENTER FINDER

- Bell punch easily locates and allows center punching of ends on round stock of up to 35mm
- Hardened to 48-52 HRC.
- A very handy tool if with you require precise drilling on round bar.

Item 8606-7006

Sale Price **\$2067** (E)



HARLINGEN® HIGH PRECISION 5C COLLETS

- Clamping nose HRC55, body HRC40 and thread HRC25.
- Engineered for precise machining.
- Roughness Ra 0.4
- Internal and external thread machining after heat treatment reduces deformation, burrs and provides you with smooth threaded engagement.
- "STEP" Hardened and Ground Surface throughout protects the connection with spindle, also guarantees high accuracy, durability and long tool life.



Run-out accuracy < 0.0006 INCHES at 3xD



MADE OF HIGH GRADE TOOL STEEL

Item#	Size	Sale (F)	Item#	Size	Sale (F)
9742-3003	1/16"	11.87	9742-3038	39/64"	11.87
9742-3005	3/32"	11.87	9742-3039	5/8"	11.87
9742-3006	7/64"	11.87	9742-3040	41/64"	11.87
9742-3007	1/8"	11.87	9742-3041	21/32"	11.87
9742-3008	9/64"	11.87	9742-3042	43/64"	11.87
9742-3009	5/32"	11.87	9742-3043	11/16"	11.87
9742-3010	11/64"	11.87	9742-3044	45/64"	11.87
9742-3011	3/16"	11.87	9742-3045	23/32"	11.87
9742-3012	13/64"	11.87	9742-3046	47/64"	11.87
9742-3013	7/32"	11.87	9742-3047	3/4"	11.87
9742-3014	15/64"	11.87	9742-3048	49/64"	11.87
9742-3015	1/4"	11.87	9742-3049	25/32"	11.87
9742-3016	17/64"	11.87	9742-3050	51/64"	11.87
9742-3017	9/32"	11.87	9742-3051	13/16"	11.87
9742-3018	19/64"	11.87	9742-3052	53/64"	11.87
9742-3019	5/16"	11.87	9742-3053	27/32"	11.87
9742-3020	21/64"	11.87	9742-3054	55/64"	11.87
9742-3021	11/32"	11.87	9742-3055	7/8"	11.87
9742-3022	23/64"	11.87	9742-3056	57/64"	11.87
9742-3023	3/8"	11.87	9742-3057	29/32"	11.87
9742-3024	25/64"	11.87	9742-3058	59/64"	11.87
9742-3025	13/32"	11.87	9742-3059	15/16"	11.87
9742-3026	27/64"	11.87	9742-3060	61/64"	11.87
9742-3027	7/16"	11.87	9742-3061	31/32"	11.87
9742-3028	29/64"	11.87	9742-3062	63/64"	11.87
9742-3029	15/32"	11.87	9742-3063	1	11.87
9742-3030	31/64"	11.87	9742-3064	1-1/64"	11.87
9742-3031	1/2"	11.87	9742-3065	1-1/32"	11.87
9742-3032	33/64"	11.87	9742-3066	1-3/64"	11.87
9742-3033	17/32"	11.87	9742-3067	1-1/16"	11.87
9742-3034	35/64"	11.87	9742-3068	1-5/64"	11.87
9742-3035	9/16"	11.87	9742-3069	1-3/32"	11.87
9742-3036	37/64"	11.87	9742-3070	1-7/64"	11.87
9742-3037	19/32"	11.87	9742-3071	1-1/8"	11.87

2024 BUY IT NOW

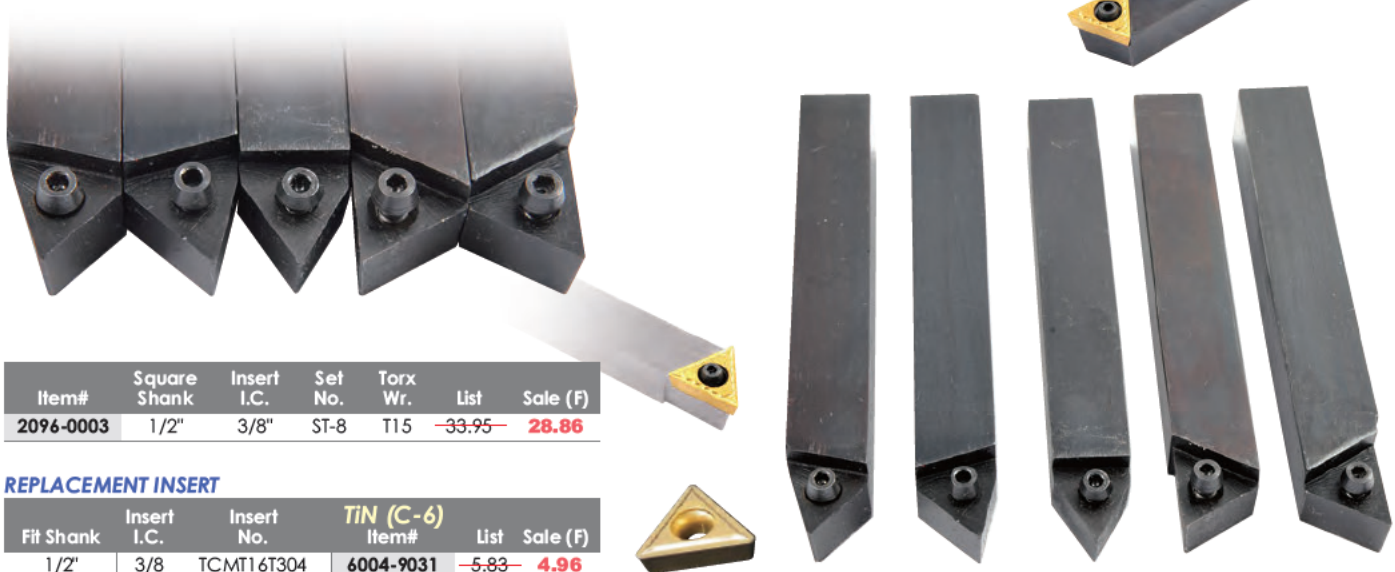
Sale Ends Dec. 31, 2024

5PC 1/2" SHANK INDEXABLE CARBIDE TURNING TOOL SET

Set Includes:

- 2 Pieces Style "A" (0°) for Turning, Facing, Boring, and Chamfering (AR & AL)
- 2 Pieces Style "B" (15°) for Turning, Facing, Boring, and Lead Angles (BR & BL)
- 1 Piece Style "E" (30°) for Turning, Facing, Boring, Chamfering, Threading, and V-Grooving.

INSERTS NOT INCLUDED



Item#	Square Shank	Insert I.C.	Set No.	Torx Wr.	List	Sale (F)
2096-0003	1/2"	3/8"	ST-8	T15	33.95	28.86

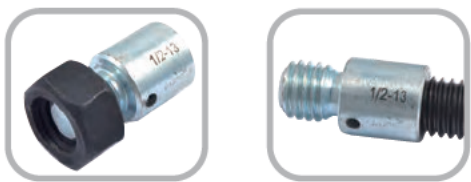
REPLACEMENT INSERT

Fit Shank	Insert I.C.	Insert No.	TIN (C-6) Item#	List	Sale (F)
1/2"	3/8"	TCMT16T304	6004-9031	5.83	4.96

Replaceable inserts provide rotating cutting edges for maximum efficiency.

44PC THREAD DETECTIVE/IDENTIFIER SET - Inch & Metric

- All gages have individual sockets and are accurately and neatly arranged in a customized foam seat resulting in effortless selection of the required gage for swift identification of nut and bolt sizes.
 - Especially useful in tight and confined spaces, these checkers surpass plastic and cable thread alternatives in convenience and effectiveness.
 - Nut and bolt thread identifier. Each size has a nut and bolt checker on the same gage.
 - Thread sizes are etched on each gage
 - Index marked on the insert for easy identify
 - Complete with a sturdy PVC box with a portable handle. Convenient to take anywhere.
- **Inch nut and bolt sizes include** #6-32, #6-40, #8-32, #10-32, #10-24, 1/4-28, 1/4-20, 5/16-24, 5/16-18, 3/8-24, 3/8-16, 7/16-20, 7/16-14, 1/2-20, 1/2-13, 9/16-18, 9/16-12, 5/8-18, 5/8-11, 3/4-16, 3/4-10, 1-12 & 1-8.
 - **Metric Nut and bolt sizes include** M3X0.5, M4X0.7, M5X0.8, M6X1.0, M7X1.0, M8X1.0, M8X1.25, M10X1.0, M10X1.25, M10X1.50, M12X1.25, M12X1.50, M12X1.75, M14X1.5, M14X2.0, M16X1.5, M16X2.0, M20X1.5, M20X2.5 & M24X2.0, M24X3.0.



44PC Set
~~List \$81.68~~
Item # **4901-0036**
Sale Price **\$73.51 (F)**



Sale Ends Dec. 31, 2024
2024 BUY IT NOW

2024
BUY IT NOW
SAVE UP TO 15%

Fall / Winter Sale

R8 SHANK BORING HEAD SET - WITH CARBIDE TIPPED BORING BARS



Boring Head:

- 2-inch diameter for accurate and controlled boring.
- Adjustable slides for precise depth control.
- Hardened and ground for durability and accuracy.
- Graduations on the dial for direct reading at increments of 0.005".

Carbide Tipped Boring Bars:

- Set includes 5 C6 carbide-tipped boring bars for various applications.
- Carbide tips provide superior cutting durability.
- Different bar sizes for versatility in bore sizes.

R8 Shank:

- R8 shank for secure and stable tool holding. Fits Bridgeport-type mills.
- Threaded back for adapting shank, ensuring a secure fit.
- 7/16"-20 drawbar thread.

Chatter-Free Boring:

- Design minimizes chatter for smoother machining.
- Enhances surface finish and overall machining quality.

Precision Machining>>>>>

Achieve high-precision bores for accurate fits. Reduce scrap and rework with reliable cutting performance.

Versatility>>>>>

Adapt to different machining needs with the variety of boring bar sizes. Ideal for both professionals, hobbyists and machinists.

Adjustments>>>>>

Use the adjustable slides to set the desired depth of cut.

Reading the Dial>>>>>

Each division on the dial corresponds to a specific depth increment. Direct reading graduation of 0.005" for precise depth control.

Feed Dial>>>>>

Monitor the feed dial for precise control over the cutting speed. Graduated at 0.001" per 0.050" for fine-tuning the feed rate.

Chatter-Free Boring>>>>>

Minimizes chatter for smoother machining. Enhances surface finish and overall quality.

45° Flycutter:

- 5/16" hole diameter.
- Enhances versatility for additional machining needs.
- Ideal for facing and surface milling operations.

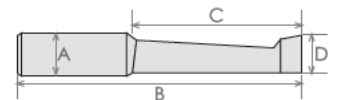
Carrying Case:

- Includes a durable carrying case for convenient storage.
- Protects the set from damage and ensures all components are organized.



Boring Head Set Includes:

- 2" boring head
- R8 shank
- 5 pc. C6 carbide tipped boring bar set
- 45° fly cutter and protective case



BORING BAR SET INCLUDES:

A	B	C	D	Inch
Diameter	Length	Bore Depth	Min. Bore	
1/2	3-1/16	1-1/2	5/16	
1/2	3-1/4	1-3/4	1/2	
1/2	3-7/8	2-3/8	7/16	
1/2	3-7/8	2-3/8	9/16	
1/2	4-1/2	3-1/16	9/16	

Item#	Head Size	Shank Taper	Shank To Head	Tool Capacity	Dia. of Boring	Sale (E)
1061-0106	2"	R8	1-1/2"~18	Up to 1/2"	3/8-5"	120.70

2024 BUY IT NOW

Sale Ends Dec. 31, 2024

R8 BORING HEAD SETS - WITH INDEXABLE BORING BARS

- Indexable boring bars take carbide inserts (included).
- Head features a threaded back for interchangeable shanks.
- Set complete with Boring Head, Boring Shank, Indexable Boring Bars, Torx & L-shape Hex Wrenches and fitted carrying case.
- A micrometer lead screw provides 0.001" direct reading accuracy and ease of adjusting.

- 1 DIV = 0.001 meaning **on the 0-50 dial**, when turning the dial by 1 division/graduation, the boring head's travel is 0.001" in radius movement, 0.002" in diameter movement; **on the 0-100 dial**, when turning the dial by 1 division/graduation, the boring head's travel is 0.0005" in radius movement, 0.001" in diameter movement.

C6 GRADE: carbide for steel and alloy steel



1906-0201 Shown



1906-0205 Shown



Item#	Boring Head (Dia.)	Shank	No. of Boring Bars	Boring Bar Hole Size	Sale (F)
1906-0201	2"	R8	4	1/2"	185.09
1906-0205	3"	R8	5	3/4"	314.93

SPECIFICATIONS:

	2" HEAD	3" HEAD
Graduations	0.001"/0-50	0.001"/0-100
Boring Head Thread	1-1/2"-18 T.P.I.	1-1/2"-18 T.P.I.
Offset	5/8"	1"
Crosshole	1/2"	3/4"
Shank Thread (Drawbar End) R8	7/16"-20 UNC	7/16"-20 UNC
Min. Boring Diameter	0.394"	0.394"
Max. Boring Diameter	5.906"	7.874"
Max. Boring Depth	1.970"	3.150"

BORING BAR SET INCLUDED

Set	Shank	Min. Bore	(Inch) OAL	Bore Depth	For Holder	Uses Insert	Uses Torx Wr.	Uses Screw
4	1/2	5/16	3-3/8	1-7/8	B10C2	CCMT21.5_	T-8	M2.5x5.0
		7/16	3-3/4	2-1/4	B12T2	TCMT21.5_		
		9/16	4-1/8	2-3/4	B16T2	TCMT21.5_		
		3/4	2-7/8	1-7/16	R100C2	CCMT21.5_		
5	3/4	5/16	3-3/8	1-7/8	D10C2	CCMT21.5_	T-8	M2.5x5.0
		7/16	3-3/4	2-3/8	D12T2	TCMT21.5_		
		1/2	4-1/8	2-3/4	D16T2	TCMT21.5_		
		11/16	5-5/16	3-7/8	D20T2	TCMT21.5_		
		1-1/16	5-1/8	3-9/16	R125C3	CCMT32.5_		

R8 BORING HEAD SET - WITH HSS BORING BARS

- Rugged design allows excellent rigidity for chatter-free boring.
- Head features a threaded back for interchangeable shanks.
- Set complete with Boring Head, Boring Shank, Solid HSS Boring Bars & L-shape Hex Wrenches and fitted carrying case.
- Dial on head with 0.001" graduation for accurate hole sizing.

SPECIFICATIONS:

	2" HEAD
Boring Head Thread	1-1/2"-18 T.P.I.
Offset	5/8"
Crosshole	1/2"
Shank Thread (Drawbar End) R8	7/16"-20 UNC
Min. Boring Diameter	0.300"
Max. Boring Diameter	5.700"
Max. Boring Depth	2.300"



Item#	Boring Head (Dia.)	Shank	No. of Boring Bars	Boring Bar Hole Size	Sale (F)
1906-5935	2"	R8	5	1/2"	110.37

Sale Ends Dec. 31, 2024
2024 BUY IT NOW

2024
BUY IT NOW
SAVE UP TO 15%

Fall / Winter Sale

NMTB30 SHANK BORING HEAD SET - WITH CARBIDE TIPPED BORING BARS

Precision Machining>>>>>

Achieve high-precision bores for accurate fits. Reduce scrap and rework with reliable cutting performance.

Versatility>>>>>

Adapt to different machining needs with the variety of boring bar sizes. Ideal for both professionals, hobbyists and machinists.

Adjustments>>>>>

Use the adjustable slides to set the desired depth of cut.

Reading the Dial>>>>>

Each division on the dial corresponds to a specific depth increment. Direct reading graduation of 0.005" for precise depth control.

Feed Dial>>>>>

Monitor the feed dial for precise control over the cutting speed. Graduated at 0.001" per 0.050" for fine-tuning the feed rate.

Chatter-Free Boring>>>>>

Minimizes chatter for smoother machining. Enhances surface finish and overall quality.

Boring Head:

- 2-inch diameter for accurate and controlled boring.
- Adjustable slides for precise depth control.
- Hardened and ground for durability and accuracy.
- Graduations on the dial for direct reading at increments of 0.005".

Carbide Tipped Boring Bars:

- Set includes 5 C6 carbide-tipped boring bars for various applications.
- Carbide tips provide superior cutting durability.
- Different bar sizes for versatility in bore sizes.



NMTB Shank:

- Secure tool holding, fits machines with a NMTB30 spindle.
- Threaded back for adapting shank, ensuring a secure fit.
- 1/2"-13 drawbar thread.

Chatter-Free Boring:

- Design minimizes chatter for smoother machining.
- Enhances surface finish and overall machining quality.

45° Flycutter:

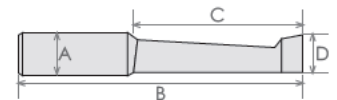
- 5/16" hole diameter.
- Enhances versatility for additional machining needs.
- Ideal for facing and surface milling operations.

Carrying Case:

- Includes a durable carrying case for convenient storage.
- Protects the set from damage and ensures all components are organized.

Boring Head Set Includes:

- 2" boring head
- NMTB30 shank
- 5 pc. C6 carbide tipped boring bar set
- 45° fly cutter and protective case



BORING BAR SET INCLUDES:

A Diameter	B Length	C Bore Depth	D Min. Bore
1/2	3-1/16	1-1/2	5/16
1/2	3-1/4	1-3/4	1/2
1/2	3-7/8	2-3/8	7/16
1/2	3-7/8	2-3/8	9/16
1/2	4-1/2	3-1/16	9/16

Item#	Head Size	Shank Taper	Shank To Head	Tool Capacity	Dia. of Boring	Sale (E)
1061-0058	2"	NMTB30	1-1/2"~18	Up to 1/2"	3/8-5"	120.70

2024 BUY IT NOW

Sale Ends Dec. 31, 2024

BT30 SHANK BORING HEAD SET - WITH CARBIDE TIPPED BORING BARS

Precision Machining>>>>>

Achieve high-precision bores for accurate fits. Reduce scrap and rework with reliable cutting performance.

Versatility>>>>>

Adapt to different machining needs with the variety of boring bar sizes. Ideal for both professionals, hobbyists and machinists.

Adjustments>>>>>

Use the adjustable slides to set the desired depth of cut.

Reading the Dial>>>>>

Each division on the dial corresponds to a specific depth increment. Direct reading graduation of 0.005" for precise depth control.

Feed Dial>>>>>

Monitor the feed dial for precise control over the cutting speed. Graduated at 0.001" per 0.050" for fine-tuning the feed rate.

Chatter-Free Boring>>>>>

Minimizes chatter for smoother machining. Enhances surface finish and overall quality.



BT30 Shank:

- Designed to work with machines featuring BT30 spindles, providing a versatile solution for a wide range of machining equipment.

Chatter-Free Boring:

- Design minimizes chatter for smoother machining.
- Enhances surface finish and overall machining quality.

45° Flycutter:

- 5/16" hole diameter.
- Enhances versatility for additional machining needs.
- Ideal for facing and surface milling operations.

Carbide Tipped Boring Bars:

- Set includes 5 C6 carbide-tipped boring bars for various applications.
- Carbide tips provide superior cutting durability.
- Different bar sizes for versatility in bore sizes.

Boring Head:

- 2-inch diameter for accurate and controlled boring.
- Adjustable slides for precise depth control.
- Hardened and ground for durability and accuracy.
- Graduations on the dial for direct reading at increments of 0.005".

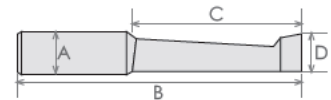
Carrying Case:

- Includes a durable carrying case for convenient storage.
- Protects the set from damage and ensures all components are organized.



Boring Head Set Includes:

- 2" boring head
- BT30 shank
- 5 pc. C6 carbide tipped boring bar set
- 45° fly cutter and protective case



BORING BAR SET INCLUDES:

A Diameter	B Length	C Bore Depth	D Min. Bore
1/2	3-1/16	1-1/2	5/16
1/2	3-1/4	1-3/4	1/2
1/2	3-7/8	2-3/8	7/16
1/2	3-7/8	2-3/8	9/16
1/2	4-1/2	3-1/16	9/16

Item#	Head Size	Shank Taper	Shank To Head	Tool Capacity	Dia. of Boring	Sale (E)
1061-0096	2"	BT30	1-1/2"~18	Up to 1/2"	3/8-5"	120.70

Sale Ends Dec. 31, 2024
2024 BUY IT NOW

2024
BUY IT NOW
SAVE UP TO 15%

Fall / Winter Sale

MT2 & MT3 SHANK BORING HEAD SET - WITH CARBIDE TIPPED BORING BARS



Boring Head:

- 2-inch diameter for accurate and controlled boring.
- Adjustable slides for precise depth control.
- Hardened and ground for durability and accuracy.
- Graduations on the dial for direct reading at increments of 0.005".

Carbide Tipped Boring Bars:

- Set includes 5 C6 carbide-tipped boring bars for various applications.
- Carbide tips provide superior cutting durability.
- Different bar sizes for versatility in bore sizes.

MT2 & MT3 Shanks:

- Secure tool holding, fits machines with a Morse Taper #2 or 3 spindle, providing a versatile solution for a wide range of machining equipment.
- Threaded back for adapting shank, ensuring a secure fit.
- 3/8"-16 drawbar thread.

Chatter-Free Boring:

- Design minimizes chatter for smoother machining.
- Enhances surface finish and overall machining quality.

Precision Machining>>>>>

Achieve high-precision bores for accurate fits. Reduce scrap and rework with reliable cutting performance.

Versatility>>>>>

Adapt to different machining needs with the variety of boring bar sizes. Ideal for both professionals, hobbyists and machinists.

Adjustments>>>>>

Use the adjustable slides to set the desired depth of cut.

Reading the Dial>>>>>

Each division on the dial corresponds to a specific depth increment. Direct reading graduation of 0.005" for precise depth control.

Feed Dial>>>>>

Monitor the feed dial for precise control over the cutting speed. Graduated at 0.001" per 0.050" for fine-tuning the feed rate.

Chatter-Free Boring>>>>>

Minimizes chatter for smoother machining. Enhances surface finish and overall quality.

45° Flycutter:

- 5/16" hole diameter.
- Enhances versatility for additional machining needs.
- Ideal for facing and surface milling operations.

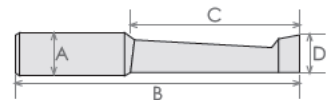
Carrying Case:

- Includes a durable carrying case for convenient storage.
- Protects the set from damage and ensures all components are organized.



Boring Head Set Includes:

- 2" boring head
- MT2 & MT3 shanks
- 5 pc. C6 carbide tipped boring bar set
- 45° fly cutter and protective case



BORING BAR SET INCLUDES:

A	B	C	D
Diameter	Length	Bore Depth	Min. Bore
1/2	3-1/16	1-1/2	5/16
1/2	3-1/4	1-3/4	1/2
1/2	3-7/8	2-3/8	7/16
1/2	3-7/8	2-3/8	9/16
1/2	4-1/2	3-1/16	9/16

Item#	Head Size	Shank Taper	Shank To Head	Tool Capacity	Dia. of Boring	Sale (E)
1061-0074	2"	MT2 & MT3	1-1/2"~18	Up to 1/2"	3/8-5"	119.00

2024 BUY IT NOW

Sale Ends Dec. 31, 2024

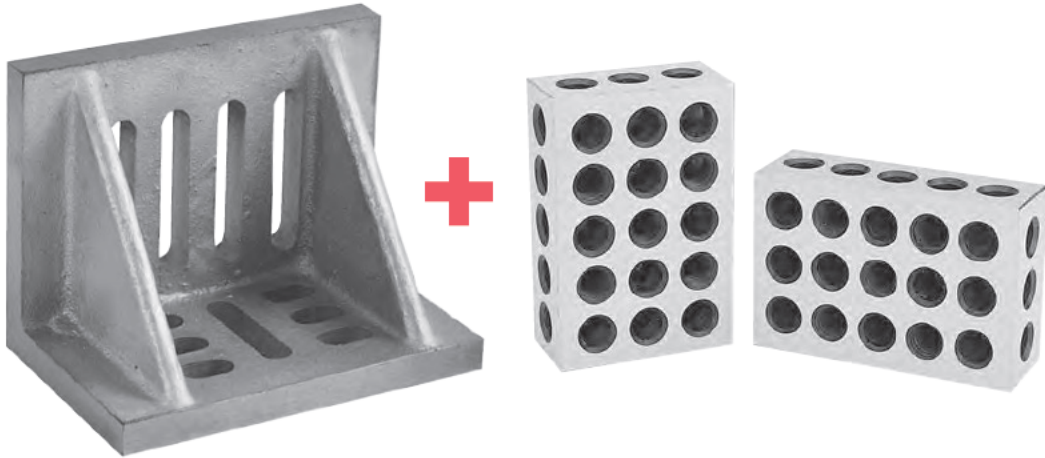
2PC SLOTTED ANGLE PLATE & 1-2-3 BLOCK COMBO SETS

3x2.5x2" Angle Plate
& 1-2-3 BLOCK
Item 9999-0005
Sale Price **\$3422** (F)

4.5x3.5x3" Angle Plate
& 1-2-3 BLOCK
Item 9999-0006
Sale Price **\$3806** (F)

6x5x4.5" Angle Plate
& 1-2-3 BLOCK
Item 9999-0007
Sale Price **\$5369** (F)

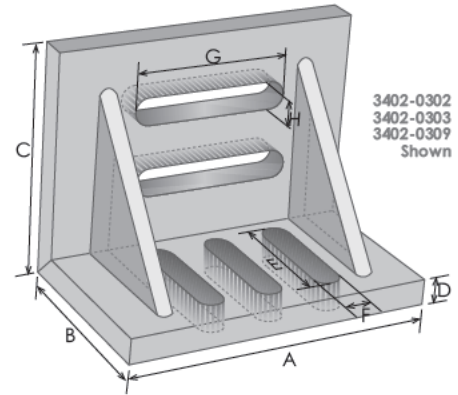
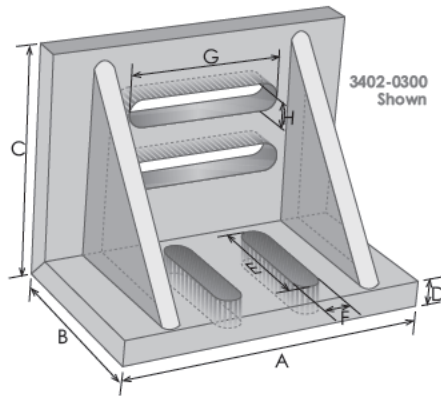
8x6x5" Angle Plate
& 1-2-3 BLOCK
Item 9999-0004
Sale Price **\$6745** (F)



SLOTTED ANGLE PLATES -Webbed

- Made of high tensile cast iron properly seasoned against distortion.
- Clamping slots are widely used for machining, layout and inspection.
- Accurately machined and ground square and parallel on outside and ends.

MACHINE TO .002 PER 6"



Angle Plate Only

Item#	(Inch)								Wt. (lbs)
	A	B	C	D	E	F	G	H	
3402-0300	3	2.5	2	9	40	10	37	10	5
3402-0302	4.5	3.5	3	12.5	50	11	70	11	7
3402-0303	6	5	4.5	13	74	12	86	12	11
3402-0309	8	6	5	15	98	14	105	14	17

PRECISION 1-2-3 BLOCK SET

- Heat treated and case hardened to HRC 55 to 60.
- Hardened and precision ground on all 6 sides of each block.
- Accuracy with squareness on all sides within .0002" per inch.
- 23 holes consists of 5 tapped holes (3/8" - 16 for 1-2-3) for clamping and 18 untapped holes drilled.
- Cross drilling design gives minimum weight and maximum strength.
- Dimensions: 1-2-3 is 1 x 2 x 3"

**MATCHED PAIRS
AND SOLD AS PAIR**

1-2-3 Block Set Only
Item 3402-0005

5 Tapped Holes & 18 Untapped Through Holes

Sale Ends Dec. 31, 2024

2024 BUY IT NOW

INTS SHOW SPECIAL
2024
BUY IT NOW
SAVE UP TO 15%

Fall / Winter Sale

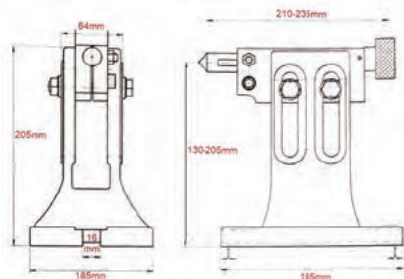
ADJUSTABLE TAILSTOCKS - For Rotary Tables



Item#	Fits Table	Adjustable Height (Min.~Max.)	Weight (lbs.)
3906-2406	4~6"	42~92mm/1.65~3.62"	6.2
3906-2407	6~8"	93~125mm/3.66~4.92"	22.5



The height can be varied when working with different index centers, while the angle of inclination can be changed for various machining applications. In addition, the tip of the carrier is finely rotatable. Clamping is made by tightening the bolts.



Fits 4~6" Rotary Table
Item 3906-2406
Sale Price **\$6426** (F)

Fits 6~8" Rotary Table
Item 3906-2407
Sale Price **\$6899** (F)

Dasqua® METRIC OUTSIDE MICROMETERS & SET

DIN 863

- Strictly made in accordance with DIN 863.
- With ratchet stop for constant pressure.
- Spindle thread hardened, ground and lapped for ultimate accuracy.
- Clear graduations laser-etched on satin chrome finish for easy reading.
- With spindle lock.
- Carbide measuring surfaces ground for longer service life.
- Standards included above 0-25mm micrometer.
- Fitted case.

• Carbide measuring surface (Hardness ≥ 89HRA) guarantees longer working life and higher wear resistance.

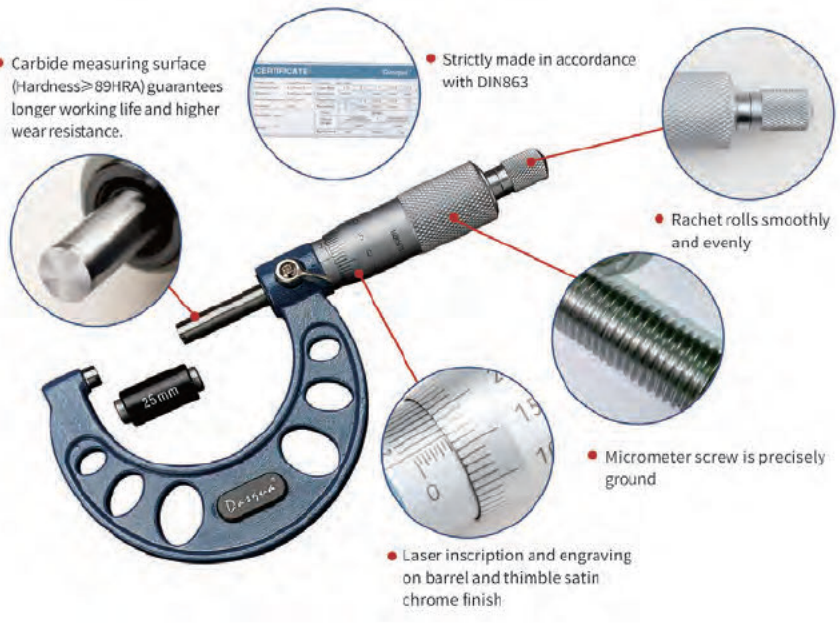
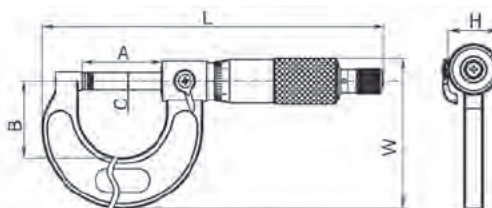
• Strictly made in accordance with DIN863

• Ratchet rolls smoothly and evenly

• Micrometer screw is precisely ground

• Laser inscription and engraving on barrel and thimble satin chrome finish

3PC Set
0~75mm Range
Item 4111-8206
Sale Price **\$11930** (F)



.01MM GRADUATION

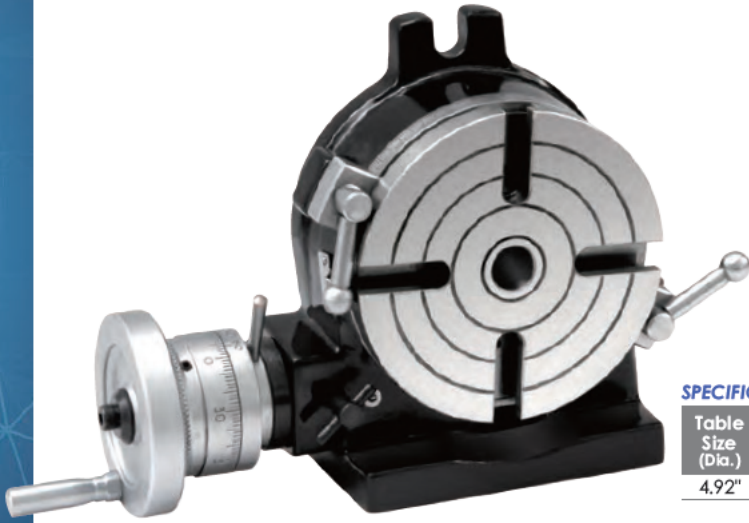
Item#	Range	(mm)						Accuracy	Sale (F)
		A	B	C	L	W	H		
4111-8105	0-25mm	31	29.5	Ø6.5	133	58.5	Ø18	0.004"	33.26
4111-8110	25-50mm	56	38	Ø6.5	137.2	76	Ø18	0.004"	42.09
4111-8115	51-75mm	81	51	Ø6.5	162.7	91	Ø18	0.005"	45.66
4111-8130	125-150mm	156	89	Ø6.5	263.8	142	Ø18	0.006"	68.87



2024 BUY IT NOW

Sale Ends Dec. 31, 2024

5" HORIZONTAL & VERTICAL PRECISION ROTARY TABLE



- Rotary table is precision ground.
- Low profile design.
- Worm gear is easily disengaged for free rotation.
- Rotary table parts are strategically positioned for easy access.
- The one piece worm and shaft are hobbled from solid alloy steel.
- Graduated 360 degrees.
- 10 second vernier reading.
- One rotation of handle equals 4° on collar.

5" ROTARY TABLE
Item 3906-2305
Sale Price \$21675 (F)
 Wt. 20 Lbs

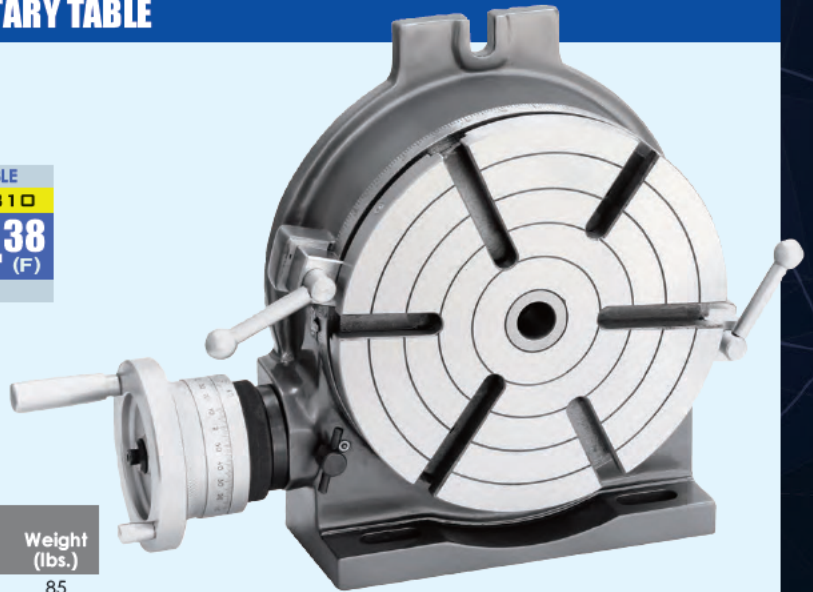
SPECIFICATIONS:

Table Size (Dia.)	Center Hole	Vert. Center Height	Horizontal Overall Height	Vertical Overall Height	Number of T-slots	T-slot Width	Gear Ratio	Weight (lbs.)
4.92"	2M.T.	3-5/8"	3.3"	7"	4	7/16"	90:1	20

10" HORIZONTAL & VERTICAL PRECISION ROTARY TABLE

- Rotary table is precision ground.
- Low profile design.
- Worm gear is easily disengaged for free rotation.
- Rotary table parts are strategically positioned for easy access.
- The one piece worm and shaft are hobbled from solid alloy steel.
- 10 second vernier reading.
- One rotation of handle equals 4° on collar.
- Graduated 360 degrees.

10" ROTARY TABLE
Item 3906-2310
Sale Price \$41438 (F)
 Wt. 85 Lbs



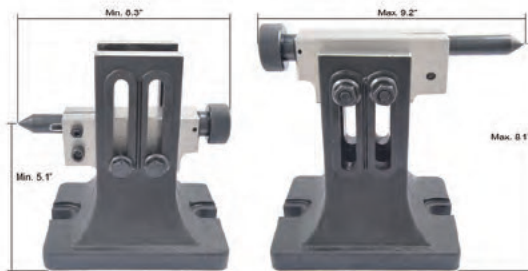
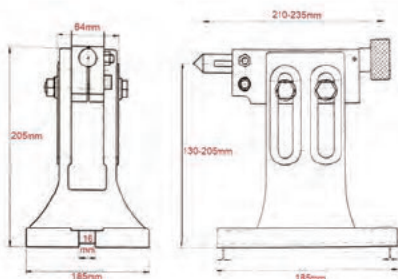
SPECIFICATIONS:

Table Size (Dia.)	Center Hole	Vert. Center Height	Horizontal Overall Height	Vertical Overall Height	Number of T-slots	T-slot Width	Weight (lbs.)
10"	3M.T.	6.5"	4.5"	12.6"	6	0.55"	85

ADJUSTABLE TAILSTOCK - For Rotary Tables

- Adjustable height: 5.2~8.1"

Fits 8~12" Rotary Table
Item 3906-2411
Sale Price \$11322 (F)



The height can be varied when working with different index centers, while the angle of inclination can be changed for various machining applications. In addition, the tip of the carrier is finely rotatable. Clamping is made by tightening the bolts.



Sale Ends Dec. 31, 2024
2024 BUY IT NOW

2024
BUY IT NOW
SAVE UP TO 15%

Fall / Winter Sale

6" ROTARY TABLE KIT

KIT INCLUDES:

Rotary Table, Dividing Plates, Tail Stock, Clamping Kit & 4-Jaw Self-Centering Lathe Chuck With Mounting Plate

- Rotary table is precision ground.
- Low profile design .
- Worm gear is easily disengaged for free rotation.
- Rotary table parts are strategically positioned for easy access.
- The one piece worm and shaft are hobbled from solid alloy steel.
- 10 second vernier reading.
- One rotation of handle equals 4° on collar.
- Graduated 360 degrees

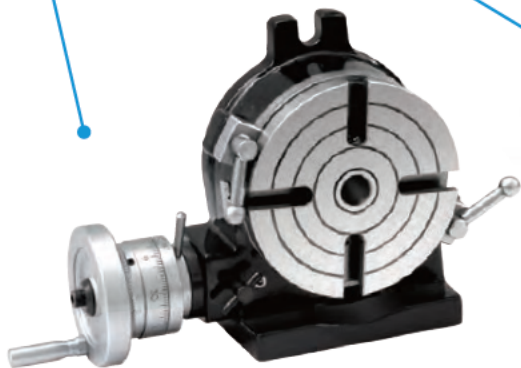
6" Rotary Table Kit	
Item	3906-2316
Sale Price	\$548.25 (F)
WT. 51 Lbs	

BUY A COMPLETE KIT & SAVE!

Table Size (Dia.)	Center Hole	Vert. Center Height	Horizontal Overall Height	Vertical Overall Height	Number of T-slots	T-slot Width
6"	2MT	3.9"	3.1"	8.1"	4	0.43"

ROTARY TABLE

- Rotary tables can be used in a horizontal or vertical position and with a lathe chuck.



DIVIDING PLATES

- Suitable for rotary tables.
- Set includes: index plates, crank handle, 3 screws, sector & U washer.

SET INCLUDES:

Plate A - 26, 30, 34, 38, 41, 44, 47, 51, 57, 28, 32, 37, 39, 43, 46, 49, 53, 59

Plate B - 62, 67, 71, 77, 81, 87, 91, 97, 63, 69, 73, 83, 89, 93, 99



Dividing Plate Set

ADJUSTABLE TAIL STOCK

- Adjustable height: 3.2~4.3"



Tail Stock



Rotary Table & 4-Jaw Chuck with Aluminum Plate



Clamping Kit

16 PC CLAMPING KIT

- Drop forged steel.
- All parts are case hardened and heat treated.

EACH KIT CONTAINS:

For 6" Rotary Table: 16PC Two pc each of Step Clamp, Step Block, and Four PC each of Stud, T-slot Nut & Flanged Nut.

4" 4-JAW SELF-CENTERING LATHE CHUCK

- Made of high grade tool steel.
- Universal scroll chuck.
- 2 sets of solid jaws included (ID & OD).
- Chuck wrench included.



2024 BUY IT NOW

Sale Ends Dec. 31, 2024

8" ROTARY TABLE KIT

KIT INCLUDES:
Rotary Table, Dividing Plates, Tail Stock, Clamping Kit & 4-Jaw Self-Centering Lathe Chuck With Mounting Plate

- Rotary table is precision ground.
- Low profile design.
- Worm gear is easily disengaged for free rotation.
- Rotary table parts are strategically positioned for easy access.
- The one piece worm and shaft are hobbled from solid alloy steel.
- 10 second vernier reading.
- One rotation of handle equals 4° on collar.
- Graduated 360 degrees

8" Rotary Table Kit	
Item	3906-231B
Sale Price	\$726 ⁷⁵ (F)
Wt. 111 Lbs	

BUY A COMPLETE KIT & SAVE!

Table Size (Dia.)	Center Hole	Vert. Center Height	Horizontal Overall Height	Vertical Overall Height	Number of T-slots	T-slot Width
8"	3MT	5.3"	4.1"	10.4"	4	0.55"

ROTARY TABLE

- Rotary tables can be used in a horizontal or vertical position and with a lathe chuck.

DIVIDING PLATES

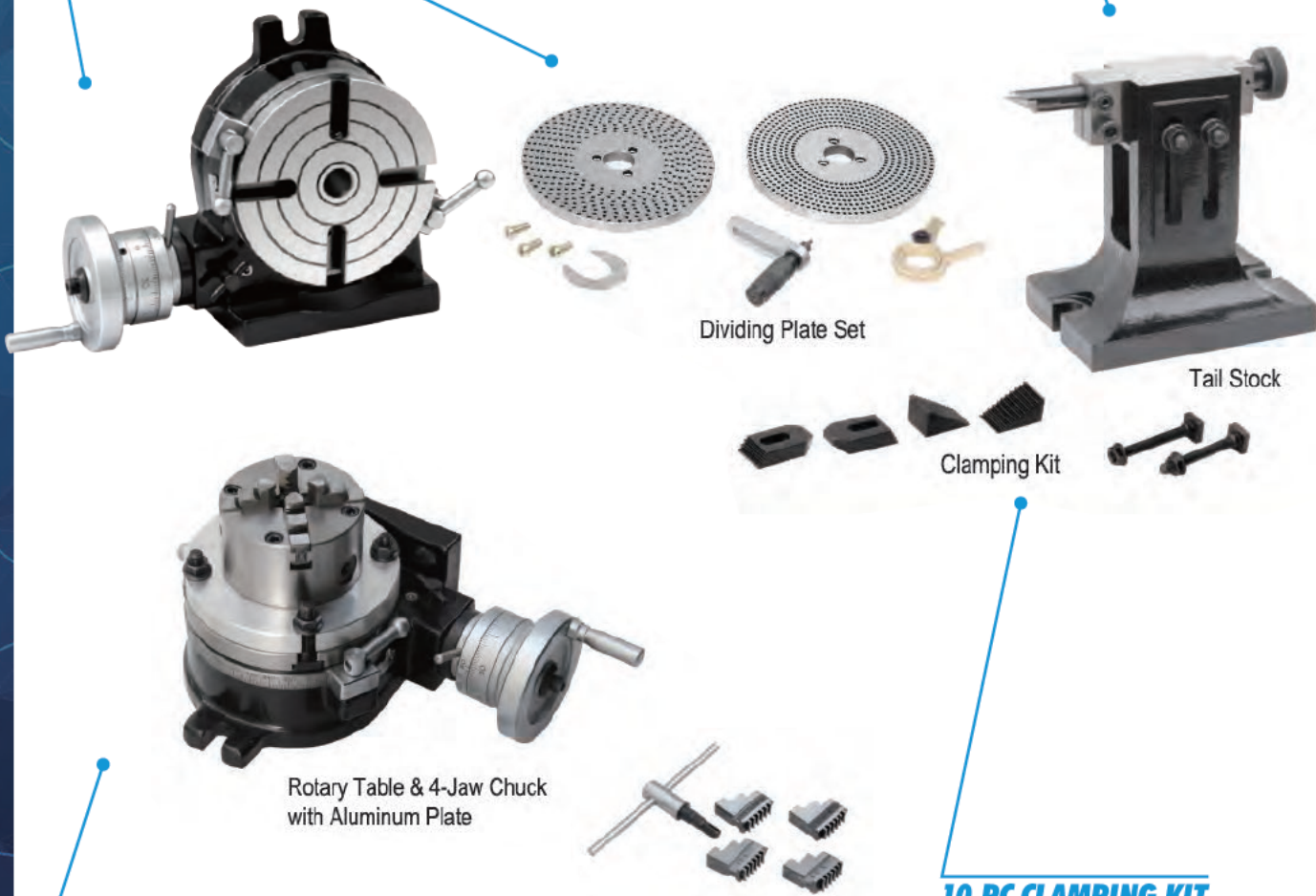
- Suitable for rotary tables.
- Set includes: index plates, crank handle, 3 screws, sector & U washer.

SET INCLUDES:

- Plate A** - 26, 30, 34, 38, 41, 44, 47, 51, 57, 28, 32, 37, 39, 43, 46, 49, 53, 59
- Plate B** - 62, 67, 71, 77, 81, 87, 91, 97, 63, 69, 73, 83, 89, 93, 99

ADJUSTABLE TAIL STOCK

- Adjustable height: 4.5~5.7" for 8" Rotary Table



Rotary Table & 4-Jaw Chuck with Aluminum Plate

Dividing Plate Set

Tail Stock

Clamping Kit

5" 4-JAW SELF-CENTERING LATHE CHUCK

- Made of high grade tool steel.
- Universal scroll chucks.
- 2 sets of solid jaws included (ID & OD).
- Chuck wrench included.

10 PC CLAMPING KIT

- Drop forged steel.
- All parts are case hardened and heat treated.

EACH KIT CONTAINS:

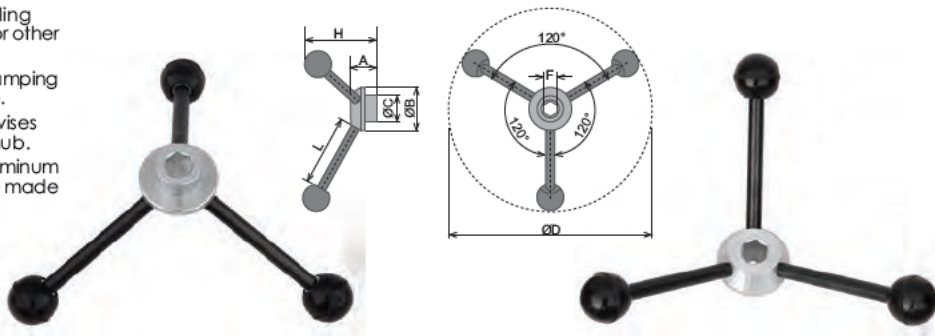
For 8" Rotary Table: Two pc each of Step Clamp, Step Block, Stud, T-slot Nut & Flanged Nut.

2024
BUY IT NOW
SAVE UP TO 15%

Fall / Winter Sale

Pro-Series VISE SPEED HANDLES

- Designed for milling vises and used for other applications.
- Speed up the clamping force of the vise.
- Fits most milling vises with same hex hub.
- Hub made of aluminum and handles are made of steel.



Fits 9/16" Hex Hub
Item 3906-0200
Sale Price \$2746 (F)

Fits 5/8" Hex Hub
Item 3906-0201
Sale Price \$2746 (F)

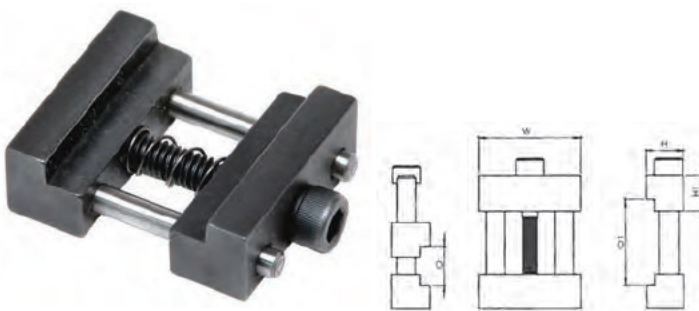
Fits 3/4" Hex Hub
Item 3906-0202
Sale Price \$2746 (F)

SPECIFICATIONS:

Item#	Hex Hub (F)	Max Dia. (D)	Depth (H)	Hub Height (A)	Hub Dia. (B)	Dia. (C)
3906-0200	9/16	12"	4-1/2	1-3/8	2-1/2	1-3/8
3906-0201	5/8	12"	4-1/2	1-3/8	2-1/2	1-3/8
3906-0202	3/4	12"	4-1/2	1-3/8	2-1/2	1-3/8

QUICK CLAMP WORK STOPS - For Machine Vise

- Fits mill vises with 3/8-7/8" thick jaws
- Steel body
- Very handy for small parts that do not require the full length of vise jaws.
- Clamps quickly & easily to the top of existing hard jaws or soft jaws



3/8-3/4" Capacity
Item 3906-2131
Sale Price \$1173 (F)

1/2-7/8" Capacity
Item 3906-2132
Sale Price \$1173 (F)

SPECIFICATIONS:

Item#	Min. Cap. (O)	Max Cap. (OI)	Width (W)	Thick. (H1)	Thick. (H)
3906-2131	3/8	3/4	1	3/8	3/8
3906-2132	1/2	7/8	1-1/2	1/2	1/2

3" & 4" ROUND MACHINE VISE FOR ROTARY TABLES

- Made from tool steel.
- Hardened and ground.
- Low profile.
- Mounting holes for easy attachment to rotary table or slides on milling table.
- Mounting T-nut and cap screws included.
- V-groove for holding round parts.

3" Vise
Item 3906-2213
Sale Price \$4077 (F)

4" Vise
Item 3906-2214
Sale Price \$4292 (F)



SPECIFICATIONS	3"	4"
T-nut Width	7.8mm	7.6mm
Ja Width	64mm	80mm
Jaw Depth	20mm	20mm
Jaw Opening	28mm	40mm
Base Diameter	80mm	100mm

2024 BUY IT NOW

Sale Ends Dec. 31, 2024

Dasqua® WATERPROOF DIGITAL IP65 Z-AXIS SETTERS



0.001MM RESOLUTION

- Accuracy (tolerance range): $\pm 0.002\text{mm}/0.0001''$, Repeatability: $0.003\text{mm}/0.0001''$
- 3V Lithium battery CR2032

Starting At
\$119.30

- **Used to help tool setting**
Can be used in IP65 working environment (with inductive measurement against splash water) and will not damage the tool edge

- **Resolution reaches 0.001mm**
Higher than other zero setting devices

- **Lighting indicating at "0"**
More obvious and accurate compared to mechanic zero setting device

- **With magnetic base**
Fixed on machine steadily and shorten tool setting time and improve work efficiency greatly

- **Provided in fitted aluminum case**

Item#	Height	Resolution	Sale (F)
1801-1005	50mm	0.001mm/0.00005"	119.30
1801-1010	100mm	0.001mm/0.00005"	186.45

GROMMET SETTING DIES

- Manufactured from solid steel for inserting sheet brass washer & teeth grommets.
- Useful tool for setting up eyelets.



Item#	For Eyelet Size	Sale (F)
8606-2281	10mm	10.34
8606-2282	13mm	11.31

Sale Ends Dec. 31, 2024

2024 BUY IT NOW

INTS SHOW SPECIAL
2024
BUY IT NOW
SAVE UP TO 15%

Fall / Winter Sale

ALUMINUM & STEEL SOFT VISE JAWS

- Fits Kurt Anglock™, HHIP & similar precision milling machine vises.
- Ensures stable and secure grip on workpieces.
- Guards against surface damage or marring during clamping.
- Customize jaws for drill or mill features.

- **Material Compatibility:**
 - **Aluminum:** Suited for softer materials.
 - **Steel:** Ideal for heavy-duty machining with robust materials.
- Perfect for easy and quick set-ups, reducing down time.



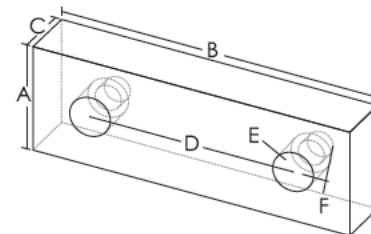
3900-2291 Shown



3900-2297 Shown

SOLD SET OF 2PCS

For Vise Size	Height A	Length B	Hole Space D	Screw Size E	Hole Size F	Jaw Thick. C	Material	Item#	Set of 2pc Sale (E)
4"	1-1/2	4-1/8	2.500	0.59	.413	1	Aluminum	3900-2291	18.45
4"	1-1/2	4-1/8	2.500	0.59	.413	1	Steel	3900-2297	27.02
6"	2	6-1/8	3.875	0.79	.530	1	Aluminum	3900-2293	16.09
6"	2	6-1/8	3.875	0.79	.530	1	Steel	3900-2298	21.18



MT2 SLOTTING SAW ARBOR

Morse Taper Slotting Saw Arbor offers a reliable and precise solution for slotting operations. Its robust construction and adjustable capacity make it a valuable tool.

- Accepts saw blades from 1/2" to 1"
- Blades are firmly secured in position with hex head screw
- MT2 shank with secure M10 draw bar.
- High-quality steel
- Great for precision slotting saw tasks.



Item 3906-0143
Sale Price **\$1389** (F)

DIMENSIONS:

Shank	Drawbar Thread	For Saw Hole Sizes
MT2	M10	1/2, 5/8, 3/4, 7/8 & 1"

STRAIGHT SHANK DIE HOLDER

- Straight shank die holder for hand operations as well as for machines.
- Knurling body is provided for easy handlings.
- A durable and versatile solution for securely holding up to 25mm dies with a 10mm shank, ensuring reliable performance.
- Durable construction for longevity.
- Robust design for reliability.
- Fits machines with a 10mm chuck.
- Reliable performance in die-holding applications.
- Die capacity: 25mm
- Shank dia. 10mm
- Uses 13/16 & 1" O.D. round adjustable dies.

Item 3906-4901
Sale Price **\$1615** (F)



2024 BUY IT NOW

Sale Ends Dec. 31, 2024

Dasqua®

**IP54 WATER RESISTANT HEAVY DUTY
DIGITAL ELECTRONIC CALIPER
LONG JAW - 6" JAW LENGTH**

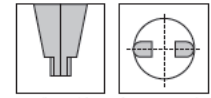
Gallop + CR2032
CABLE 03
DIN 862
mm/in
Data output

- With sturdy frame and big size for high stability.
- Made of solid stainless steel.
- Made in accordance with **DIN862**.
- With data-output and metric-inch conversion function.
- IP54 protection against liquid.
- Includes CR2032 battery and hard plastic case.
- Extended reach - 6" jaw length.
- Longer jaws contribute to more accurate measurements and facilitate the measurement of larger, longer objects or hard-to-reach areas.
- **Buttons on caliper:**
ON/OFF: Power on/off switch
ABS/INC: Relative/absolute measurement
ZERO: Zero setting button
mm/in: metric/inch conversion
SET: presetting button
HOLD: data hold button
- Fine adjustment.

**INCH/METRIC
.0005" RESOLUTION**



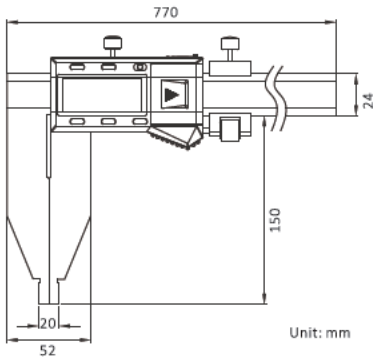
6" LONG JAW



Radiused jaws for accurate ID measurement



Long Jaw

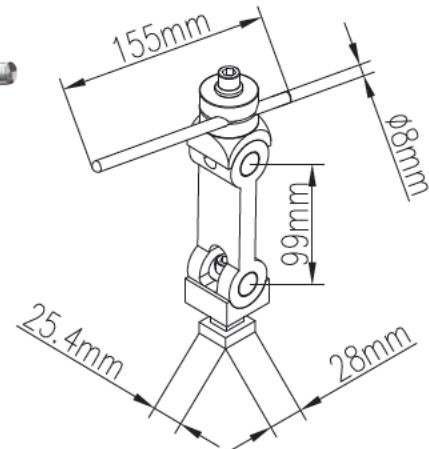


Item#	Range	Reading	(mm)					Accuracy	Sale (F)
			L1	L2	L3	W1	T1		
2220-8165	0-24"/0-600mm	0.01mm / 0.0005"	770	44	100	24	20.32	0.05mm/0.002"	244.96

5 AXIS MILLING WORK STOP - 5/8" TABLE SLOTS

Enables versatile and precise positioning of workpieces for complex machining tasks. Offers a cost-effective solution for achieving accurate and repeatable setups without compromising quality. Simple and straightforward design for easy installation and usage. Despite the low cost, designed with durable materials to withstand machining forces and ensure long-term reliability. For use with repetitive jobs that require exact placement in the vise.

- 5 Axis Adjustment, 5/16" diameter x 6" length stop rod, locking lever can be positioned at 360 degrees.
- T nut fits 5/8" table slots.
- Height 8", Length 8"



Item 3900-2117
Sale Price **\$3642** (F)

2024
BUY IT NOW
 SAVE UP TO 15%

Fall / Winter Sale

Pro-Series KEYLESS DRILL CHUCKS WITH INTEGRAL SHANKS

- Pro-series drill chucks are engineered precisely and offer outstanding performance with superior craftsmanship, ensuring accurate performance at an unbeatable value.
- **High Precision TIR $\leq .002$ "**: Achieve precise drilling with confidence.
- **Superior Craftsmanship**: Crafted with care for smooth operation, longevity, and reliability.
- **Integral Shank Design**: Enhanced stability and performance for your most demanding tasks.

- **3 Jaw clamping**: the 3 jaws can be easily opened and closed without any tools or keys.
- The integral shank is more compact than a combination drill chuck and arbor eliminating the chuck slipping on its arbor.

T.I.R. $\leq .002$ "

**SUPERIOR FINISH
 & CRAFTSMANSHIP**



Item#	Clamping Capacity	Shank	Drawbar End	List	Sale (F)
3701-4671	0~1/2"	R8	7/16"-20	131.24	111.55
3701-4672	1/64~5/8"	R8	7/16"-20	134.36	114.21
3701-4675	1/64~1/2"	MT3	Tang	128.12	108.90
3701-4676	1/64~5/8"	MT3	Tang	131.24	111.55
3701-4680	1/64~1/2"	MT4	Tang	131.24	111.55
3701-4681	1/64~5/8"	MT4	Tang	134.36	114.21
3701-4684	1/64~1/2"	BT30	M12x1.75	116.24	98.80
3701-4688	0~1/2"	NMTB #40	5/8"-11	160.00	136.00
3701-4689	1/64~5/8"	NMTB #40	5/8"-11	166.24	141.30
3701-4692	0~1/2"	CAT40	5/8"-11	166.24	141.30
3701-4693	1/64~5/8"	CAT40	5/8"-11	172.52	146.64



R8 (3701-4671)Shown

MT (3701-4675)Shown

BT30(3701-4684) Shown

NMTB (3701-4688)Shown

CAT (3701-4692)Shown

PRECISION CHROME-PLATED DRILL CHUCKS-With Key

- Chrome plating provides a combination of protection, durability, ease of maintenance and aesthetics, enhancing the performance and longevity of the drill chuck.
- The special treatment of surface nickel plating improves the product's performance.
- The nut and jaws are heat treated.
- The taper is precision ground for improved precision.
- Accuracy: 0.0059".
- Supplied with chuck key.



CHROME PLATED, TAPER MOUNTED

Item#	Capacity	Taper Mount	List	Sale (F)
3700-1102	1/32~1/2"	JT33	20.64	17.54
3700-1103	1/32~1/2"	JT6	20.64	17.54
3700-1105	1/32~5/8"	JT3	24.00	20.40
3700-1106	1/8"~5/8"	JT33	20.92	17.78

2024 BUY IT NOW

Sale Ends Dec. 31, 2024

Pro-Series 6PC OPTICAL CENTER PUNCH SET

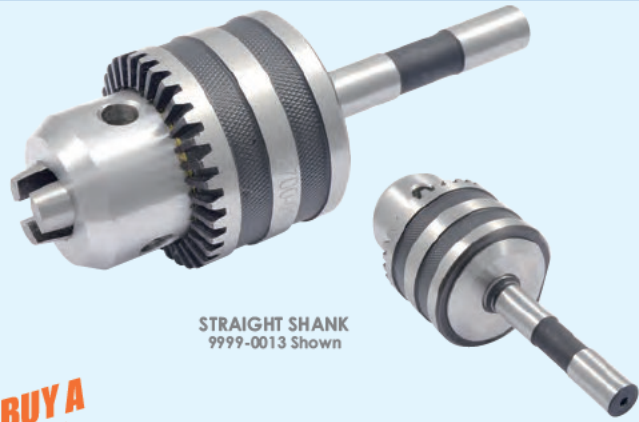
- This Optical Punch Set is indispensable when doing critical layout work. Just look down the magnifying lens and align the cross hairs or center of circle with the mark on your workpiece. Replace the magnifier with the supplied hardened tool steel punch and give it a tap.
- Punch set Includes:** a bull's eye with cross hair lens, a bull's eye with center dot and circle lens, a 60 degree punch, a 120 degree punch and a precisely manufactured aluminum main body and a fitted case.

Lens Magnifier Power: 9x
Punch Size: 3/8"
Pin Length: 1.85"
Main Body Diameter: 1.9"



DRILL CHUCK WITH KEY & ARBOR KITS

- Accurate and strong gripping force.
- For portable, bench or floor type drill presses.
- Arbors are hardened and ground.
- Supplied with chuck key.



BUY A
KIT
& SAVE!



Item#	Clamping Capacity	Taper Mount	Arbor Included	Sale (F)
9999-0008	1/32~3/8"	JT2	MT2	22.16
9999-0009	1/32~3/8"	JT2	1/2" Straight	20.81
9999-0010	1/32~3/8"	JT2	R8	25.83
9999-0011	1/32~1/2"	JT33	MT2	23.60
9999-0012	1/32~1/2"	JT33	MT3	24.32
9999-0013	1/32~1/2"	JT33	1/2" Straight	21.85
9999-0014	1/32~1/2"	JT33	5/8" Straight	23.92
9999-0015	1/32~1/2"	JT33	R8	27.27
9999-0016	1/8~5/8"	JT3	MT3	26.07
9999-0017	1/8~5/8"	JT3	MT4	29.02
9999-0018	1/8~5/8"	JT3	5/8" Straight	25.92
9999-0019	1/8~5/8"	JT3	3/4" Straight	24.62
9999-0020	1/8~5/8"	JT3	R8	29.02
9999-0022	3/16~3/4"	JT3	3/4" Straight	53.86
9999-0023	3/16~3/4"	JT3	R8	58.63

Sale Ends Dec. 31, 2024

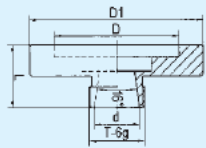
2024 BUY IT NOW

INTS SHOW SPECIAL
2024
BUY IT NOW
SAVE UP TO 15%

Fall / Winter Sale

ER COLLET FIXTURES-Plain Back

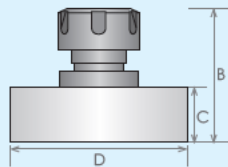
- Mount to your choice of backplate for using on a lathe or could be used as a fixture on a milling table.
- Concentricity: .04mm/ .00016"



Item#	Type	D1	(mm) D	L	No. of Bolt Hole	Bolt Hole Size	Sale (F)
3901-5016	ER-16	45	22	25	4	5	72.25
3901-5025	ER-25	102	52	36	3	M10	82.34
3901-5032	ER-32	80	55	42	3	M6	78.33
3901-5033	ER-32	100	72	42	3	M8	80.63
3901-5034	ER-32	130	100	42	3	M8x1.25	83.02
3901-5035	ER-32	160	130	42	3	M8x1.25	157.80
3901-5036	ER-40	100	72	42	3	M8	90.98
3901-5038	ER-40	132	100	42	3	M10	105.17

ER-40 COLLET CHUCK FIXTURE-Direct Mount

- Mount to D1 spindle of lathe.
- Concentricity .0002"



Item#	Type	D	Mount	B	C	Sale (F)
3901-5041	ER-40	125mm	D1-3	54.9mm	23mm	101.69
3901-5042	ER-40	125mm	D1-4	54.9mm	23mm	103.25

HEX / SQUARE ER COLLET BLOCKS

- Block Dimension: 1-3/4 x 1-3/4 x Height.
- For fast set-ups on CNC machines.
- For parallel, square or hex shapes as well as for cross hole drilling at 60°, 90° or 120°.
- Made of tool steel hardened and ground to .0005" flatness, squareness and parallelism.
- Through hole allows for long parts to be machined.
- May be used standing upright.
- Uses standard ER collets.
- ER nut included.



Item#	Shape	ER Collet	Block Height	Sale (F)
3900-5123	Square	ER-25	2.7	36.64
3900-5124	Square	ER-32	2.8	35.79
3900-5125	Square	ER-40	3.2	39.06
3900-5127	Hex	ER-25	2.7	37.30
3900-5128	Hex	ER-32	2.8	36.64
3900-5129	Hex	ER-40	3.2	39.06

Jacobs Taper ER COLLET SLEEVES & DRILL CHUCKS

- ER collet sleeves provide rigid & accurate holding of ID tooling. These collet sleeves feature ground shanks and tapers.
- Compatible with standard Jacobs taper spindles.

- Precision ground & hardened for accuracy and precision
- Can be used for coolant-thru applications
- Superior to keyed and keyless drill chucks in concentricity and holding power.



3903-6010 Shown

3903-6062 Shown

MAX. RPM: 8,000
T.I.R. < .0002"
SUPERIOR FINISH

Item#	Type	Female JT Taper	Nut Style	SHANK DIA. D1	(mm) SHANK L1	OAL L2	Sale (F)
3903-6010	ER-16	JT2	Hex	26	45	65	19.53
3903-6014	ER-20	JT2	Hex	26	45	65	19.53
3903-6018	ER-25	JT2	Spanner	32	46	67	21.87
3903-6022	ER-32	JT2	Spanner	40	40	72	23.43
3903-6028	ER-16	JT3	Hex	32	45	72	19.53
3903-6032	ER-20	JT3	Hex	32	45	72	19.53
3903-6036	ER-25	JT3	Spanner	32	56	77	21.87
3903-6040	ER-32	JT3	Spanner	40	45	77	24.53
3903-6050	ER-16	JT33	Hex	26	38	65	25.00
3903-6054	ER-20	JT33	Hex	26	38	65	25.00
3903-6058	ER-25	JT33	Spanner	32	40	72	27.34
3903-6062	ER-32	JT33	Spanner	40	48	71	29.68
3903-6070	ER-16	JT6	Hex	25	38	65	19.53
3903-6074	ER-20	JT6	Hex	26	38	65	19.53
3903-6078	ER-25	JT6	Spanner	32	38	72	21.87
3903-6082	ER-32	JT6	Spanner	40	50	73	23.43

2024 BUY IT NOW

Sale Ends Dec. 31, 2024

TANG SCREWS FOR DRAWBAR END HOLDERS (INCH)

- Precision made from tool steel, hardened.
- Inch thread.

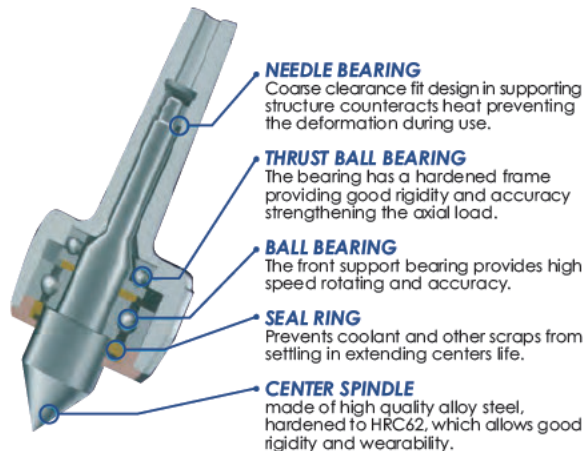
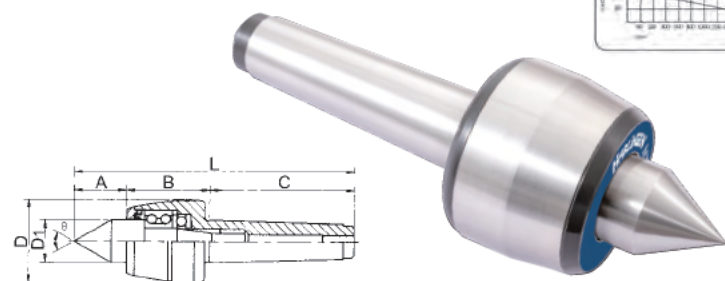
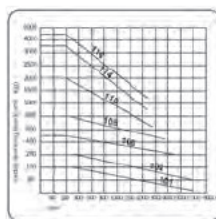
Item#	Morse Taper	Thread	Dimensions (mm)				Sale (F)
			D	L	L1	L2	
3906-0795	MT2	3/8"16	12	30	7	4	5.78
3906-0796	MT3	3/8"-16	17	40	12	4	6.12
3906-0797	MT4	5/8"-11	24	46	13	5	6.78



Tang for draw bar thread type holders

HARLINGEN® HIGH PRECISION CNC LIVE CENTERS

- High concentricity and stability thanks to high accuracy bearing system.
- Tip has 60° included angle.
- Body is hardened for extra strength and extra rigidity
- Life time lubrication for minimum required maintenance.
- Maximum concentricity deviation for ultra precision
- Point is made of high quality alloy steel, heat treated to hardness HRC62.



NEEDLE BEARING
 Coarse clearance fit design in supporting structure counteracts heat preventing the deformation during use.

THRUST BALL BEARING
 The bearing has a hardened frame providing good rigidity and accuracy strengthening the axial load.

BALL BEARING
 The front support bearing provides high speed rotating and accuracy.

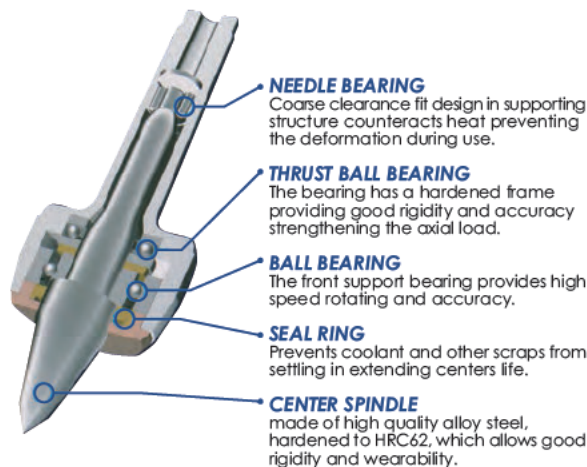
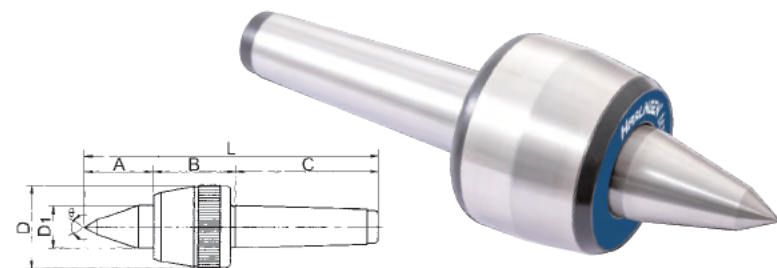
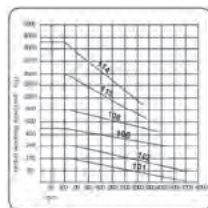
SEAL RING
 Prevents coolant and other scraps from settling in extending centers life.

CENTER SPINDLE
 made of high quality alloy steel, hardened to HRC62, which allows good rigidity and wearability.

Item#	Morse Taper	T.I.R.	Dimensions (Inch)					Load Rate lbs.	Max. RPM	Weight lbs	Sale (F)	
			A	B	C	D	D1					
9741-3232	2	.0002"	0.94	1.61	2.52	1.77	0.79	5.08	165	7000	1.10	119.12
9741-3233	3	.0002"	1.22	1.91	3.19	2.36	0.98	6.32	500	5000	2.86	143.99
9741-3234	4	.0002"	1.61	2.42	4.04	2.76	1.26	8.07	1000	3800	5.06	162.97
9741-3235	5	.0004"	1.99	3.09	5.10	3.54	1.57	10.18	1200	3000	10.34	251.98

HARLINGEN® HIGH PRECISION CNC LIVE CENTERS-EXTENDED POINT

- Especially suited for cramped work areas between center point and workpiece.
- High concentricity and stability provides high accuracy bearing system.
- Tip has 60° included angle.
- Body is hardened for extra strength and extra rigidity.
- Life time lubrication for minimum required maintenance.
- Maximum concentricity deviation for ultra precision
- Point is made of high quality alloy steel and heat treated to hardness HRC62.



NEEDLE BEARING
 Coarse clearance fit design in supporting structure counteracts heat preventing the deformation during use.

THRUST BALL BEARING
 The bearing has a hardened frame providing good rigidity and accuracy strengthening the axial load.

BALL BEARING
 The front support bearing provides high speed rotating and accuracy.

SEAL RING
 Prevents coolant and other scraps from settling in extending centers life.

CENTER SPINDLE
 made of high quality alloy steel, hardened to HRC62, which allows good rigidity and wearability.

Item#	Morse Taper	T.I.R.	Dimensions (Inch)					Load Rate lbs.	Max. RPM	Weight lbs	Sale (F)	
			A	B	C	D	D1					
9741-0232	2	.0002"	1.34	1.61	2.52	1.77	0.79	5.47	200	7000	1.50	134.17
9741-0233	3	.0002"	1.85	1.91	3.19	2.36	0.98	6.95	360	5000	3.25	160.35
9741-0234	4	.0002"	2.09	2.42	4.04	2.76	1.26	8.54	800	3800	6.20	192.42
9741-0235	5	.0004"	2.56	3.09	5.10	3.54	1.57	10.75	1200	3000	12.50	264.42

INTS SHOW SPECIAL
2024
BUY IT NOW
SAVE UP TO 15%

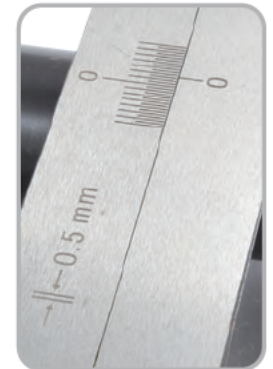
Fall / Winter Sale

MORSE TAPER TURNING ATTACHMENTS - For Lathe

- Made from alloy steel, hardened and ground.
- This attachment makes the taper turning operation much easier than before and gives you the freedom of old school method of off setting the tailstock for turning taper profile on lathe machine.
- 2 side knobs are being provided for fine and easy adjustments up to 6 degrees left and right.
- Graduation scale is being marked for user's reference where 1 division will offset the slide by 0.5 mm.



MT3 Shank
Item 3906-5072
Sale Price \$5879 (F)



MT2 Shank
Item 3906-5071
Sale Price \$5879 (F)

TEST/INSPECTION MANDRELS - MORSE TAPER

- Used for checking the alignment of machine spindle axis.
- Made of high grade tool steel
- Precision ground and heat treated for maximum concentricity.
- Serves to represent materially an axis of rotation, so that the axis can be checked for alignment.
- A mandrel mounted between centers provides a reference straight - line joining the two points (centers), so as to check the alignment of the centers.



Item#	Morse Taper	Overall Length	Sale (F)
3906-4122	MT2	11-1/8	23.90
3906-4123	MT3	13-3/16	31.65
3906-4124	MT4	15-1/4	40.70

6" HEAVY DUTY AUTO CENTER PUNCH

- HHIP heavy-duty center punch creates a starting point for drilling by making a small dent in the work piece, ensuring accurate hole placement or for marking starting points in riveting, chiseling, metalworking alignment, woodworking, scoring, or engraving.
- No hammer required.
- Double spring loaded barrel.
- Special hardened alloy steel tip for instant marking.
- Knurled body and black oxidized.



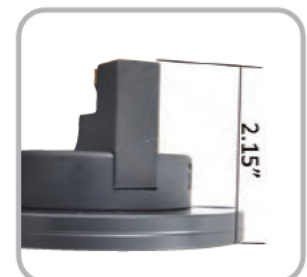
Item 8070-0484
Sale Price \$614 (F)

BALL TURNING ATTACHMENT FOR LATHE -Uses TNMG Insert

- The HHIP ball-turning attachment for a lathe helps shape spherical objects and cones on a lathe. It consists of a base, tool holder, and an adjustable mechanism to control the size of the ball.
- The tool holder positions the cutting tool; the attachment includes rotation control and stability features. This tool simplifies the process of turning balls on a lathe, making it more precise
- The bearing base in our ball-turning attachment enables the cutting arm to rotate smoothly through the use of a handle.
- This tool fits straight onto the cross slide of your Myford and similar size lathes.
- Includes one indexable TNMG insert for best turning process.



Item 3906-5311
Sale Price \$6780 (F)



2024 BUY IT NOW

Sale Ends Dec. 31, 2024

MIST COOLANT SPRAYER

- Economy coolant spray unit for a variety of applications using water or coolants.
- Three 5mm mounting holes in the base provide flexibility in locating the unit whose overall width is 46mm and height 40mm.
- The 31 cm (12.2") spray hose is easily shaped to point your nozzle at the precise location needed.
- Brass nozzle and knobs prevent rust and surfaces are knurled for easy control.
- Air and coolant intakes use a push-type attachment. The air intake is 8mm and the liquid intake is 4mm.
- The fluid hose included has a 2.5mm internal diameter, a backflow preventer and a filter.
- Use with standard air compressor (not included) with pressure range of 30 - 150 PSI.
- The system is suitable for use with any type of soluble coolant or oil (non-corrosive).
- Use with fluids that have a viscosity at 68 cSt or less.

Item 8401-0199
Sale Price **\$3570** (F)



Flexible nozzle hose to reach any angle
Easy to connect line via push-in connections
Durable copper knobs for flow control, knurled surfaces for easy grip
Line filter and backflow preventer

53PC INCH/METRIC TRANSFER PUNCH COMBO SET

- Used for transferring threaded, drilled and tapped holes.
- Undersize .0025" .
- Heat treated tempered tool steel for longer life.
- Black oxide finish.
- 28pc Set Range: 3/32-1/2" by 64ths & 17/32"
- 25pc Set Range: 1-33mm by 0.5mm

BUY COMBO SET & SAVE!



28PC & 25PC COMBO SET
Range: 3/32-1" & 1-33mm
Item 8600-0054
Sale Price **\$3102** (F)

HIGH PRECISION STEEL PIN GAGE 990PC LIBRARY SET (0.011-1.000") WITH CUSTOM DRAWER SYSTEM

- Metal drawer system
- Minus set: -0.0002"/+0.0000"
- .001" set increments, sizes marked on each pin gage.
- Made of tool steel and hardened to HRC60-62
- Finish to 10 micro or better
- Class ZZ
- OAL: 2"
- 8 pin gage handles included

Accuracy -0.0002"/+0.0000"

Application:

- Checking locations
- Measuring hole sizes and depths
- Go and No-Go gaging
- Setting micrometers
- Checking distances between holes



990 PC SET
0.011-1.000" Range
Item 4101-0060
Sale Price **\$1,782.45** (E)
Wt. 249 Lbs.

INTS SHOW SPECIAL
2024
BUY IT NOW
SAVE UP TO 15%

Fall / Winter Sale

RE-MACHINEABLE MT TAPER BLANK END ARBORS - Drawbar End

- These can be machined as per individual requirement for mounting chucks etc.
- Made of quality tool steel-shanks are precisely ground.
- Adapt the blank end to serve as an adapter for transitioning between different tooling systems.
- Customize the end to attach specialized cutting tools, enabling precision in specific machining operations.



MT2 & Blank End (28x30mm)	
Item	3706-1002
Sale Price	\$1034 (F)
Drawbar Thread: M10x1.50	

MT3 & Blank End (28x28mm)	
Item	3706-1003
Sale Price	\$808 (F)
Drawbar Thread: M12x1.75	

HAND HELD DIAMOND DRESSER

- A reliable tool for hand-held precision dressing, this diamond dresser ensures the effective shaping of grinding wheels with ease.
- The fitted plastic handle offers a firm grip for optimal control during use. The diamond tip engages with the grinding wheel, ensuring consistent and efficient material removal.
- Shank is chrome plated.
- Useful tool for dressing wheels for surface grinders, universal grinders etc.

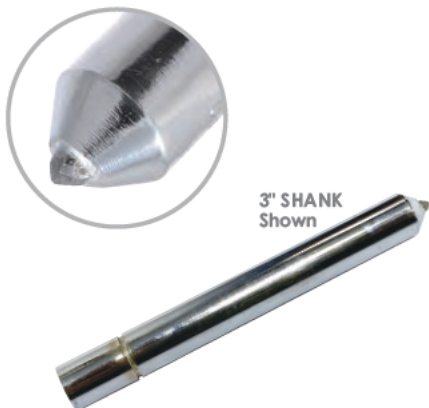


Item#	Diamond Size	Shank Dia.	Overall Length	Sale (F)
3900-0063	1/4 Carat	7/16"	8"	10.03

SINGLE-POINT DIAMOND DRESSERS - 3" & 6" SHANKS

- **HHIP Single Point Diamond Dressers** are used to reshape grinding wheels.
- Specifically designed with a diamond-tipped point for shaping, sharpening and cleaning grinding wheels by utilizing the hardness and abrasive nature of the diamond.
- The hard single-point diamond engages with the grinding wheels abrasive surface.
- Effectively removes unwanted material, reshaping and conditioning the wheel for optimal performance.
- Guarantees precise dressing, achieving accurate profiles on grinding wheels.
- Enhances overall efficiency and longevity of grinding wheels in industrial applications.
- **Extended life:** Larger diamonds may have a longer lifespan due to reduced wear in each use.

Choose a 3" dresser for precision and smaller applications and a 6" dresser for efficiency, faster material removal and larger workpieces. The decision should align with the specific needs of the grinding operation.



3" SHANK Shown



6" SHANK Shown

3" SHANK

Carat (Approx.)	3/8 x 3" Item#	Sale (F)	7/16 x 3" Item#	Sale (F)	1/2 x 3" Item#	Sale (F)
1/4	3903-0032	7.63	3903-0042	7.63	3903-0092	8.16
1/3	3903-0033	10.29	3903-0043	11.24	3903-0093	12.03
1/2	3903-0034	14.80	3903-0044	14.22	3903-0094	16.65
3/4	3903-0035	23.15	3903-0045	22.08	3903-0095	24.91
1	3903-0039	28.09	3903-0050	28.09	3903-0099	28.09
1-1/2	3903-0040	28.54	3903-0051	28.54	3903-0100	28.54
2	3903-0041	35.58	3903-0052	35.58	3903-0101	35.58

6" SHANK

Carat (Approx.)	3/8 x 6" Item#	Sale (F)	7/16 x 6" Item#	Sale (F)	1/2 x 6" Item#	Sale (F)
1/4	3903-0200	6.26	3903-0210	6.26	3903-0220	6.26
1/3	3903-0202	7.04	3903-0212	7.04	3903-0222	7.04
1/2	3903-0204	12.51	3903-0214	12.51	3903-0224	12.51
3/4	3903-0206	17.60	3903-0216	17.60	3903-0226	17.60
1	3903-0207	18.77	3903-0217	18.77	3903-0227	18.77
1-1/2	3903-0208	28.15	3903-0218	28.15	3903-0228	28.15
2	3903-0209	37.54	3903-0219	37.54	3903-0229	37.54



2024 BUY IT NOW

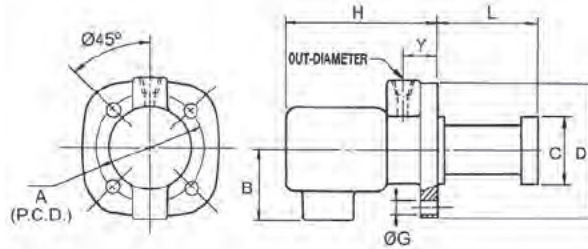
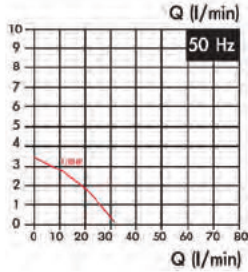
Sale Ends Dec. 31, 2024

VERTEX 1/8 HP UNDER WATER COOLANT PUMP

- This pump is high quality with anti-rust treatment, manufactured with high grade materials and inspected in five steps by a precision electronic device.

Item 3012-8122

Sale Price **\$12875** (F)



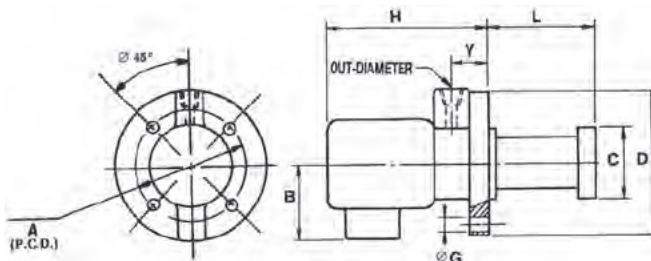
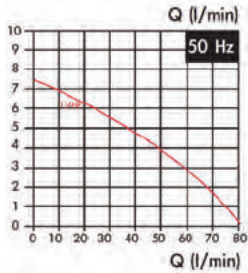
Power	Length (L)	Pumping Water 1mmin	Pumping Water 2mmin	A	B	C	D	G	H	Y	Out Diameter	Weight
1/8HP	150	27-28 L	25-26 L	128±0.2	105	Ø90	Ø150	Ø8	160	19	PT 3/8"	13 lbs.

VERTEX 1/4 HP UNDER WATER COOLANT PUMP

- This pump is high quality with anti-rust treatment, manufactured with high grade materials and inspected in five steps by a precision electronic device.

Item 3012-8125

Sale Price **\$26196** (F)



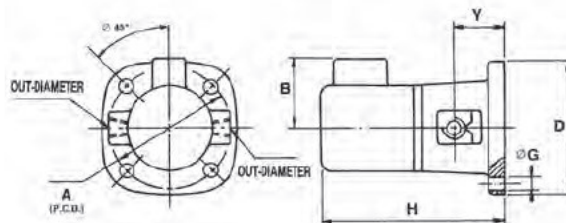
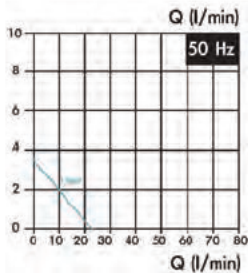
Power	Length (L)	Pumping Water 1mmin	Pumping Water 2mmin	A	B	C	D	G	H	Y	Out Diameter	Weight
1/4HP	200	74-76 L	71-72 L	158±0.2	125	Ø122	Ø180	Ø8	180	26	PT 1/2"	25 lbs.

VERTEX 1/8 HP SELF PRIMING COOLANT PUMP

- This pump is high quality with anti-rust treatment, manufactured with high grade materials and inspected in five steps by a precision electronic device.

Item 3012-8128

Sale Price **\$15042** (F)



Power	Pumping Water 1mmin	Pumping Water 2mmin	A	B	D	G	H	Y	In Diameter	Out Diameter	Weight
1/8HP	26-28 L	24-25 L	140±0.2	105	165	Ø8	195	50±0.5	PT 3/8"	PT 3/8"	13 lbs.

IMTS SHOW SPECIAL
2024
BUY IT NOW
SAVE UP TO 15%
 Sale Ends Dec. 31 2024

Fall / Winter Sale

UNIVERSAL CONCENTRICITY GAGE/CHECKERS

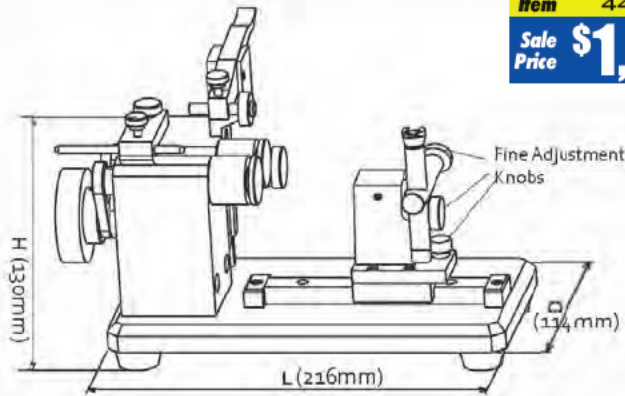
SINGLE INDICATOR HOLDER



- Concentricity Gage allows you to measure the runout of parts internal and external.
- Diameter Capacity: 0.157~0.980" (4~25 mm)
- Length Capacity: 4"
- Device Dimension: 216 (length) X 114 (width) X 130mm (height)
- Weight: 10.90 lbs.
- Accuracy: 0.00012"/ 0.003mm.
- Directional Drive Hand Wheel pushes the parts into the stop for accurate repeatable readings with equal pressure.
- Two position wheels made from solid steel
- Precision Drive Wheel has a perfect ratio to push the parts down.
- Ultra high precision ball bearings provide friction free movement.
- Heavy duty base mounted fine adjustable sliding test indicator holder. Will accept test indicator with dove tail slot.
- Adjustable mechanical arm stop holds the arm up for one handed operation.
- Two master setting pins included: 4 & 10mm diameter

Single Indicator Holder
 Item 4401-1006
 Sale Price **\$1,478³⁹** (E)

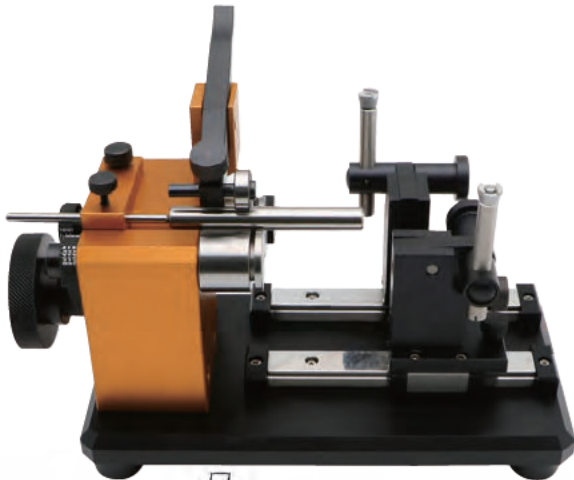
Accuracy: 0.00012"/ 0.003mm.



SHOWN WITH OPTIONAL INDICATOR(not included)



DOUBLE INDICATOR HOLDER



Double Indicator Holder
 Item 4401-1008
 Sale Price **\$1,666⁶⁴** (E)



.0005 GRADUATION
 0-0.03" Range Test Indicator
 Item 4400-0010
 Sale Price **\$434⁵** (F)

